



SKYLINE STRUCTURE



CONTENTS

— 03

INTRODUCTION

— 04

COMMERCIAL BRILLIANCE

— 05

BENEFITS

— 06

DESIGNING A NEW EXPERIENCE

— 07

FEATURES

— 08

STRUCTURE TYPES

— 12

PROJECTS

— 16

CONTACT

Introduction

HR Structures has one of the most technically advanced design & production centres in Europe.

HR Structures Australia are the official Australasian agent for HR Structures GmbH. A company that uniquely combines the customer care of a family run business with the service capacity of a global powerhouse.

Pioneering product innovation, quality and performance are at the heart of their products, people and processes, the German facility located in the Hessian town of Grebenhain, can produce up to 80,000 m² of new structures per week – ensuring fast, economical, factory-direct dispatch worldwide.

HR Structures GmbH state-of-the-art factory incorporates purpose-built production lines.

All structures are designed to comply with international design code criteria, including the USA-IBC2009/12 and AS/NZS standards.

All components used (roofs and walling systems) are designed to comply with international fire safety codes according to DIN 4102 B1, M2, BS5438/7837, USA NFPA701.



**Design.
Innovation.
Tradition.**

OUR SKYLINE

Commercial Brilliance

Skyline's Building Design & Sustainability

When designing commercial spaces, it's important to strike a balance between design and sustainability. The Skyline offers a visually attractive commercial building design that incorporates environmentally friendly solutions into its architectural choices.

The Skyline's innovative ability to be flat-packed, relocated, reconfigured, and reused makes it an extremely sustainable building solution. Plus, the Skyline's structural components can be reused, reducing the amount of waste and fit-out materials that are typically used in traditional construction methods. This results in a more efficient building process that saves time onsite.

As sustainability becomes a more significant aspect of many companies' corporate policies, the Skyline's modular system creates commercial space that meets today's evolving needs.

The Skyline is a sustainable solution for various commercial settings such as office & administration, retail, education, government, healthcare, and more. It optimises floor space while its expansive glass facades makes it ideal for car showrooms, hospitality, restaurants, and plenary spaces.



OUR SKYLINE

Benefits

The Skyline: A Modular Building with Versatile Customisation

The Skyline offers a modular design that's just as flexible and customisable as traditional buildings. From its lightweight and durable aluminium frame to its light fittings, the Skyline can function as a permanent building that is visually stunning with a range of high-end facade systems. Choose from vertically and horizontally aligned double-glazed glass combined with insulated sandwich panels. The innovative Thermo roofing system incorporates the Parapet design, made of Alucobond or PVC material providing the classic "cube characteristic" with its own customisable look.

The Skyline system uses steel-framed load bearing modules. These modules come with a range of customisations, including single leaf, double leaf or sliding doors, internal and external stairways, balustrades, decorative interior cladding, lighting, and heavy-duty flooring systems.

Modules can be stacked to create multi-level modular buildings. Choose between two or three floors with atriums, balconies, and terraces. For more space, mezzanines are a flexible way to add extra retail or personnel space.



OUR SKYLINE

Designing a New Experience

Choose from a variety of dimensions and plans

Skyline buildings are available in both single level and multi-level options. The single level option, with a standard side height of 4.00m, comes in widths ranging from 10.00m to 30.00m and can be extended to any length using 5.00m bays. The multi-level option offers side heights of 8.00m and is perfect for situations where expanding outward isn't possible.

Our single-level Skyline buildings are designed to be both functional and efficient. The prefabricated components make installation onsite a breeze, and the flexible layout ensures ample room for high-end commercial space that can be modified to fit your specific needs.

When you need to make an impression, choose our multi-level Skyline option. Upper levels are constructed atop a lower level of the same size or a larger footprint using our innovative 5.00m x 5.00m ground and middle floor module system. This system maximises internal heights by eliminating internal struts.

We also offer a variety of add-ons. Ask us about turnkey fit-out options like ceiling linings, plumbed-in wet areas, HVAC, connectivity outlets, and more!

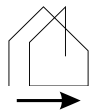


FEATURES

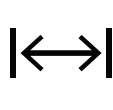
Structure Profile

- Bracing System: Internal high-level bracing giving open & clear span spaces.
- Frame Construction: Hard pressed 4 groove aluminium cube profile.
- Profile Size: Profile sizes relative to situation requirements.
- Roof Covers: Single Layer PVC, Thermo Inflatable Roof or Parapet System.
- Wind Loading: Structures are all calculated to withstand wind loading based on the physical site location, and to meet Australian and European safety standards.
- U-Values:
 1. Roofs – 1.5 W/m²K
 2. Walls & Gables – 0.44 W/m²K

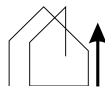
Specifications



Span Width
5.00m - 30.00m



Length
Unlimited in
5.00m bays



Side Height
Up to 4.00m
per level



Wind Load
To site specifics



Custom
Fixtures & Dimensions
available

ROOF OPTIONS

Single-skin roof cover - Flame-resistant pursuant to DIN 4102-B1. Available in transparent or opaque.

Thermal roof cover - Double-skin roof cover, which is filled with air, provides additional insulation and condensation protection in the roof area. Flame-retardant pursuant to DIN 4102-B1. Available in transparent or opaque.

Parapet - Made of Alucobond or PVC material provides the classic "cube characteristic" with its own customisable look.

WALL OPTIONS

Skyline Glass Elements

Panoramic Glass Wall

Horizontal Glass

Vertical Glass

Framed Glass

Skyline ISO Elements

Skyline Pre-Stressing System

Aluminium Cassettes

PVC Material

ABS Solid Wall

FLOOR OPTIONS

Heavy Duty Flooring System

Cassette Floor

ANCILLIARIES

Indoor/Outdoor Ramp

Gutter/Downpipe

HVAC

Internal/External Stairs

Overhead Door Canopy

Ventilation Panels

Balcony

Atrium

Mezzanine Floor

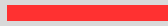
Signage Parapets

Wet areas



SKYLINE FEATURES

Accessories



Roof Cladding

Single-Layer Roof PVC Covers

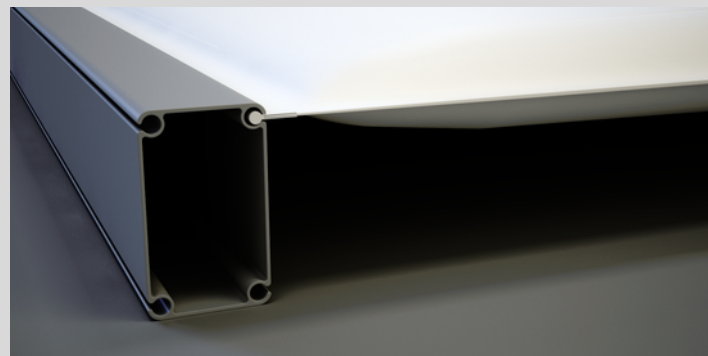
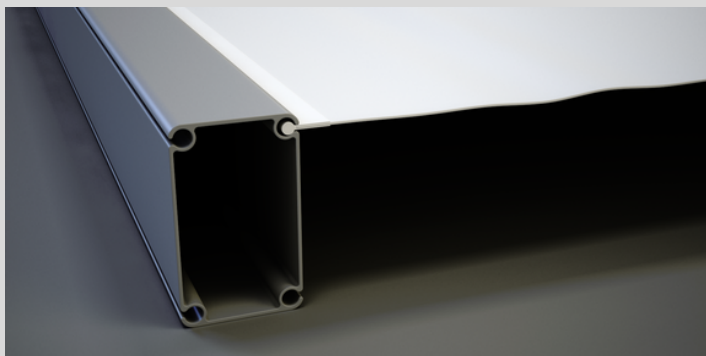
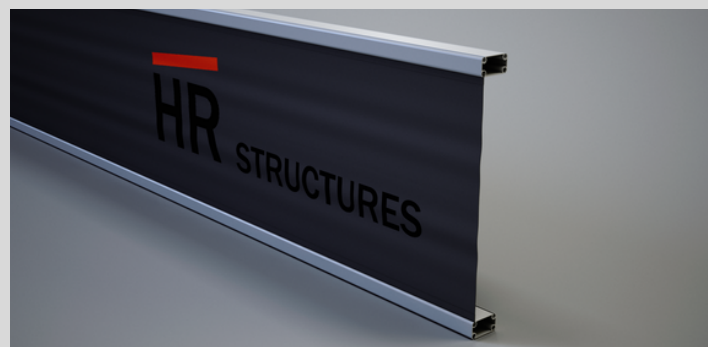
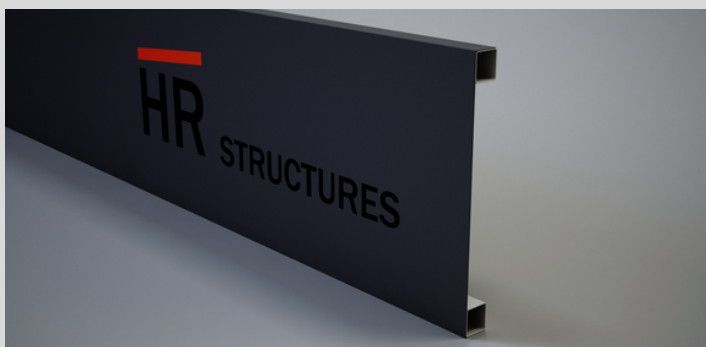
The PVC Covers, which is flame-retardant according to DIN 4102-B1, is both translucent and opaque and available in a wide variety of colours.

Thermal Roof PVC Covers

The air-filled double-shell roof PVC Covers provides additional insulation and condensation protection in the roof area. The PVC Covers, which is flame-retardant according to DIN 4102-B1, is both translucent and opaque and is available in a wide variety of colours.

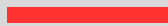
Attica

The parapet made of Alucobond or PVC material gives your Skyline the classic "cube character" with its own individually customisable look.



SKYLINE FEATURES

Accessories



Side Panels

Skyline Glass Elements

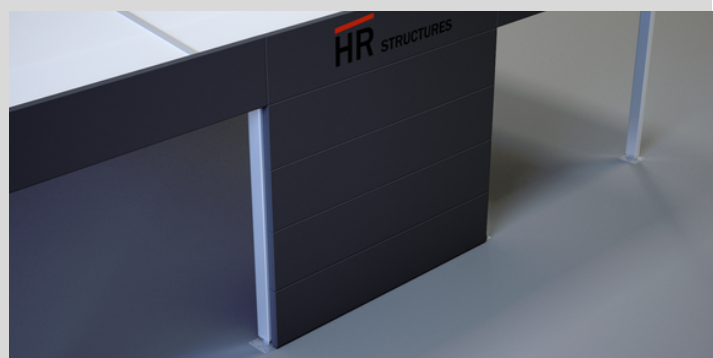
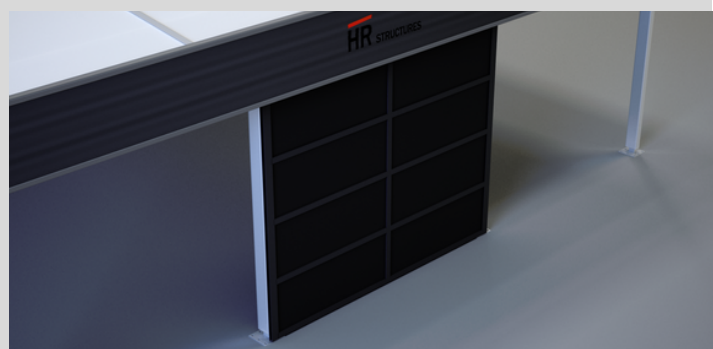
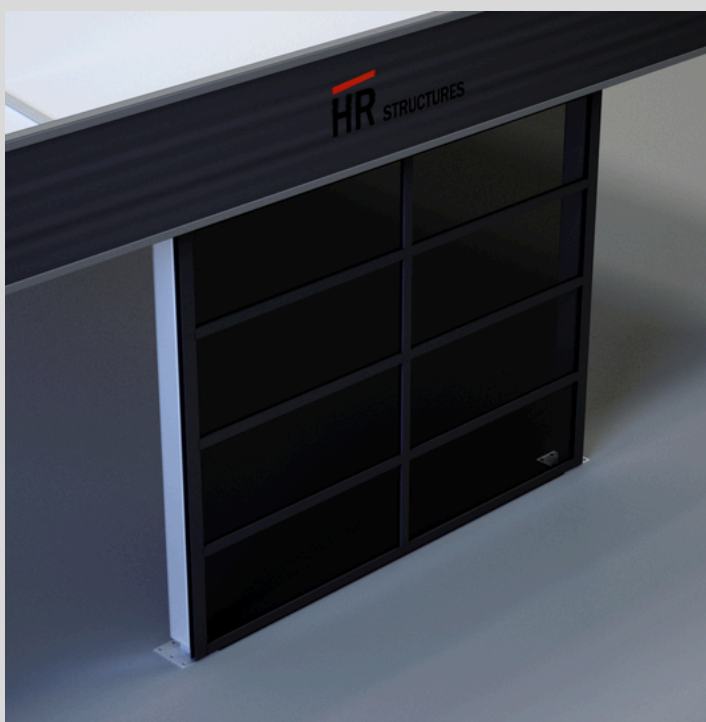
The 2.5 x 1.0m to 2.5 x 2.0m elements with glass filling are available in various tints and colours.

Skyline Iso Elements

The 2.5 x 1.0m elements with sandwich filling are available in different colours. The Iso elements are also available in a cost-effective version without an enclosed frame.

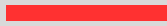
Skyline Pre-Stressing System

Whether with aluminum cassettes or PVC material, another visual highlight can be placed in front of the skyline facade.



SKYLINE FEATURES

Accessories



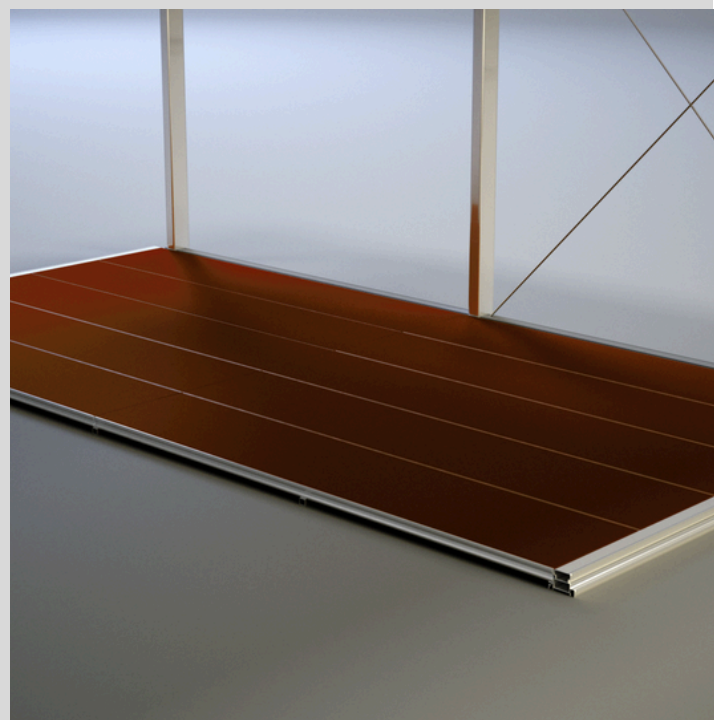
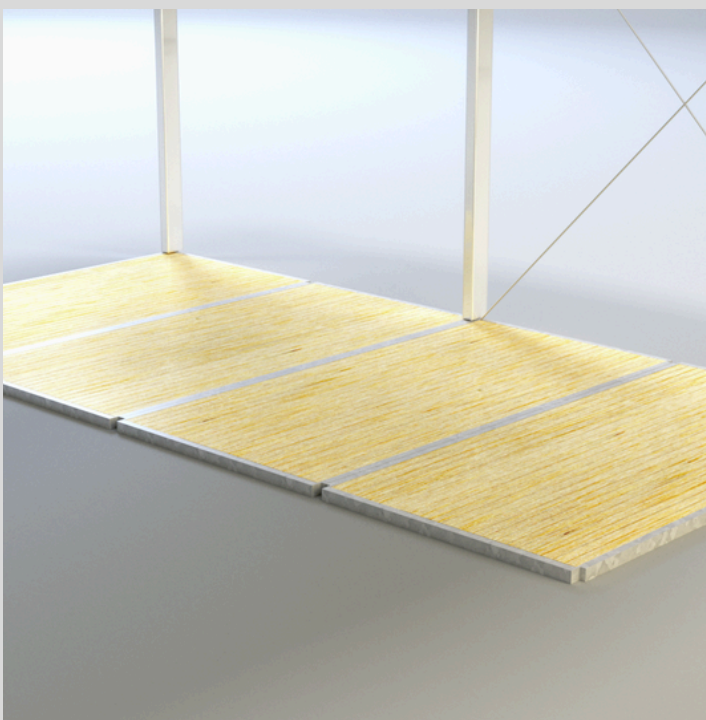
Flooring

Cassette Flooring

The visually appealing cassette floor is available with different wooden coverings and, with its lightweight aluminum substructure, has a traffic load of 350 and 500 kg/m².

Heavy Duty Flooring

The heavy-duty floor is the most efficient floor system in our range, which can be quickly installed using a forklift or crane. In addition, it has a low transport volume compared to other flooring systems.



SKYLINE FEATURES

Accessories

Doors & Accessories

Single-leaf door / double-leaf door

Entrances and exits in various facade systems, the single and double-leaf doors can be installed in our structure systems and visually adjusted to match the rest of the side paneling.

Indoor/outdoor ramp

To enable barrier-free access to our structure systems, we offer various entry and exit ramps made of steel and aluminum.

Overhead Door Shelter

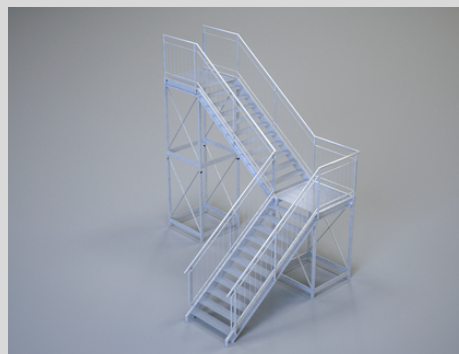
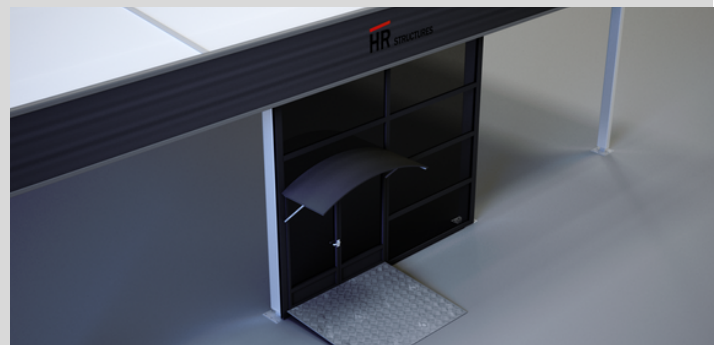
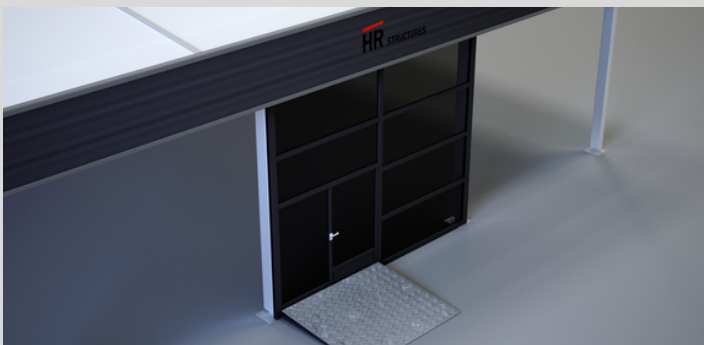
Various canopies are available separately from our doors, which visually complete your entrance area and offer weather protection for this area.

Stairs

For multi-storey skyline systems, we offer indoor and outdoor stairs in a variety of sizes, shapes and designs.

Transport Racks

Our transport racks offer optimal protection for loading and storing all structure and accessory parts.



OUR SKYLINE

Structure Types

Modular Retail

The Skyline enables commercial and retail clients to expand their businesses without disrupting operations or profits. It offers a quick and efficient way to add sales offices, showrooms, franchises, or design centres.

Modular Classrooms

Enrolment changes can strain the resources of educational systems. Skyline Structures are a state-of-the-art, efficient, and attractive solution to address this challenge. From high schools to universities, educational systems are implementing modular spaces to meet the needs of a growing student body, while avoiding the cost and time associated with traditional construction methods.

Government Buildings

The Skyline has proven to be cost-effective and time-efficient for government entities, and municipalities that have tight budgets and building construction guidelines.



OUR SKYLINE

Structure Types

Healthcare

The Skyline is a growing option in healthcare due to the need for quick expansion of services to reduce patient wait times and overcrowding. The structure offers customisation to meet the unique needs of the healthcare industry, making it suitable for both small practices and large medical complexes.

Office Buildings

The Skyline is available for temporary or permanent use, ranging from single level to multi level. The structure offers easy integration of connectivity, security, and accessibility features, and can be ready for occupancy up to 50% faster than conventionally built office space, making the Skyline a great fast-build option.





HR STRUCTURES

Skyline Structure

Werribee Motors

10.00m x 15.00m x 4.00m



HR STRUCTURES

Skyline Structure

Werribee Motors

Glass Facade with Black
Powder-Coated Frame

Your Innovative Partner in Modular Building

Modular buildings provide better opportunities for companies interested in greening the footprint of the building construction process, as well as the impacts of recycling the building after it's complete. As modular structures deliver positive environmental outcomes, then modular construction can be an ideal fit for any company looking for a flexible, renewable, and sustainable method of building.

Modular construction is a highly streamlined process that can see project times reduced by up to 50% as the structure components are manufactured offsite. And the insulated structure ensures a more consistent R-value rating (the measure of thermal resistance).

Modular structures are leading the way to reduce the extraction of new material resources, demolition waste, construction time and transportation costs, while ensuring that these structures have a new purpose beyond its planned lifespan.

Structures can be relocated, packed down in a matter of days and moved to another site. They can also be repurposed for different functions – including applications in the commercial and industrial sectors – their flexible configurations adapt well to different applications, such as offices, hospitals, warehouses, airport terminals, sporting facilities and many other large scale commercial developments.



**Design.
Innovation.
Tradition.**



Build Your Next Project

HR STRUCTURES

CONTACT



1800 505 144



sales-au@hr-structures.com



www.hrstructures.com.au



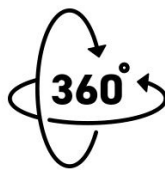
13 Pikkat Drive, Braemar NSW 2575



GERMAN
ENGINEERED



CUSTOM
SOLUTIONS



RELOCATABLE
RECONFIGURABLE



PURCHASE
OPTION



GREENER
FUTURE

