



C



— 03  
INTRODUCTION

— 04  
SKYLINE

— 12  
CARGO

— 22  
MEGA

— 30  
VEGAS

— 38  
PERTH

— 44  
MARQUEE

— 52  
CONTACT

## Introduction

HR Structures has one of the most technically advanced design & production centres in Europe.

HR Structures Australia are the official Australasian agent for HR Structures GmbH. A company that uniquely combines the customer care of a family run business with the service capacity of a global powerhouse.

Pioneering product innovation, quality and performance are at the heart of their products, people and processes, the German facility located in the Hessian town of Grebenhain, can produce up to 80,000 m<sup>2</sup> of new structures per week – ensuring fast, economical, factory-direct dispatch worldwide.

HR Structures GmbH state-of-the-art factory incorporates purpose-built production lines.

All structures are designed to comply with international design code criteria, including the USA-IBC2009/12 and AS/NZS standards.

All components used (roofs and walling systems) are designed to comply with international fire safety codes according to DIN 4102 B1, M2, BS5438/7837, USA NFPA701.







## Commercial Design at it's Best



With the Skyline structure you can get creative and build the space you see fit for your business. You have the option of building a customised space with a permanent foundation for long-term use.

Choose from single-storey or multi-storey, with a range of high-end facade systems, such as iso panels and vertical glass. There are endless possibilities including atriums, balconies, and terraces. Perfect for offices, hospitality, showrooms, restaurants and more, the Skyline creates a striking first impression.

With a fit-all modular system, we offer an effective solution to your commercial building requirements, with minimal impact on your surrounding environment.

You have the option of building a customised space with a permanent foundation for long-term use. Alternatively, you can opt for a short-term modular building to house almost any commercial application you like at any location.

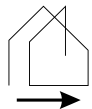
Individual buildings are designed to integrate into multiple landscapes while managing the different site and climate conditions.



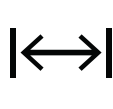
## Structure Profile

- Bracing System: Internal high-level bracing giving open & clear span spaces.
- Frame Construction: Hard pressed 4 groove aluminium cube profile.
- Profile Size: Profile sizes relative to situation requirements.
- Roof Covers: Single Layer PVC, Thermo Inflatable Roof or Parapet System.
- Wind Loading: Structures are all calculated to withstand wind loading based on the physical site location, and to meet Australian and European safety standards.
- U-Values:
  1. Roofs – 1.5 W/m<sup>2</sup>K
  2. Walls & Gables – 0.44 W/m<sup>2</sup>K

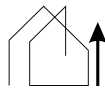
## Specifications



**Span Width**  
5.00m - 30.00m



**Length**  
Unlimited in  
5.00m bays



**Side Height**  
Up to 4.00m  
per level



**Wind Load**  
To site specifics



**Custom**  
Fixtures & Dimensions  
available

### ROOF OPTIONS

Single-skin roof cover - Flame-resistant pursuant to DIN 4102-B1. Available in transparent or opaque.

Thermal roof cover - Double-skin roof cover, which is filled with air, provides additional insulation and condensation protection in the roof area. Flame-retardant pursuant to DIN 4102-B1. Available in transparent or opaque.

Parapet - Made of Alucobond or PVC material provides the classic "cube characteristic" with its own customisable look.

### WALL OPTIONS

Skyline Glass Elements

Panoramic Glass Wall

Horizontal Glass

Vertical Glass

Framed Glass

Skyline ISO Elements

Skyline Pre-Stressing System

Alumium Cassettes

PVC Material

ABS Solid Wall

### FLOOR OPTIONS

Heavy Duty Flooring System

Cassette Floor

### ANCILLIARIES

Indoor/Outdoor Ramp

Gutter/Downpipe

HVAC

Internal/External Stairs

Overhead Door Canopy

Ventilation Panels

Balcony

Atrium

Mezzanine Floor

Signage Parapets

Wet areas



# E

---

## Roof Cladding

### Single-Layer Roof PVC Covers

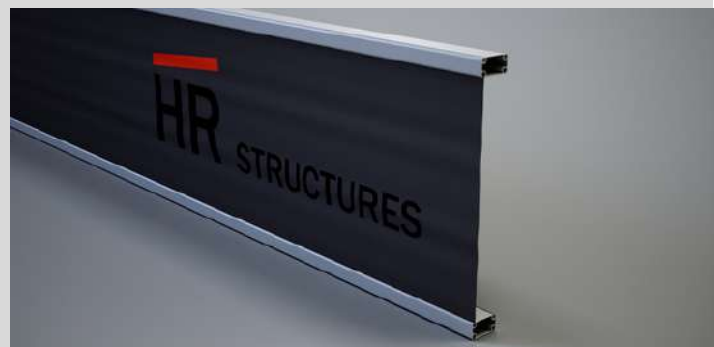
The PVC Covers, which is flame-retardant according to DIN 4102-B1, is both translucent and opaque and available in a wide variety of colours.

### Thermal Roof PVC Covers

The air-filled double-shell roof PVC Covers provides additional insulation and condensation protection in the roof area. The PVC Covers, which is flame-retardant according to DIN 4102-B1, is both translucent and opaque and is available in a wide variety of colours.

### Attica

The parapet made of Alucobond or PVC material gives your Skyline the classic "cube character" with its own individually customisable look.



# E

---

## Side Panels

### Skyline Glass Elements

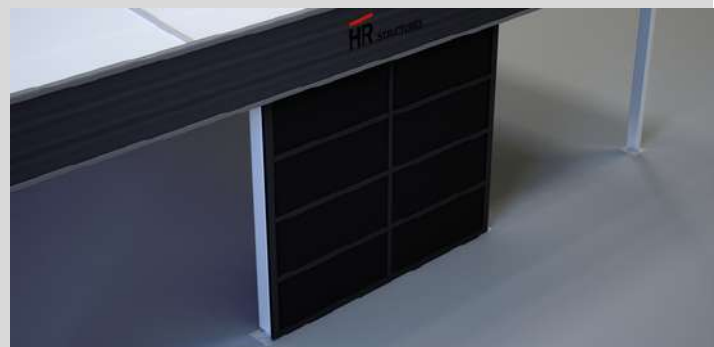
The 2.5 x 1.0m to 2.5 x 2.0m elements with glass filling are available in various tints and colours.

### Skyline Iso Elements

The 2.5 x 1.0m elements with sandwich filling are available in different colours. The Iso elements are also available in a cost-effective version without an enclosed frame.

### Skyline Pre-Stressing System

Whether with aluminum cassettes or PVC material, another visual highlight can be placed in front of the skyline facade.



# E

---

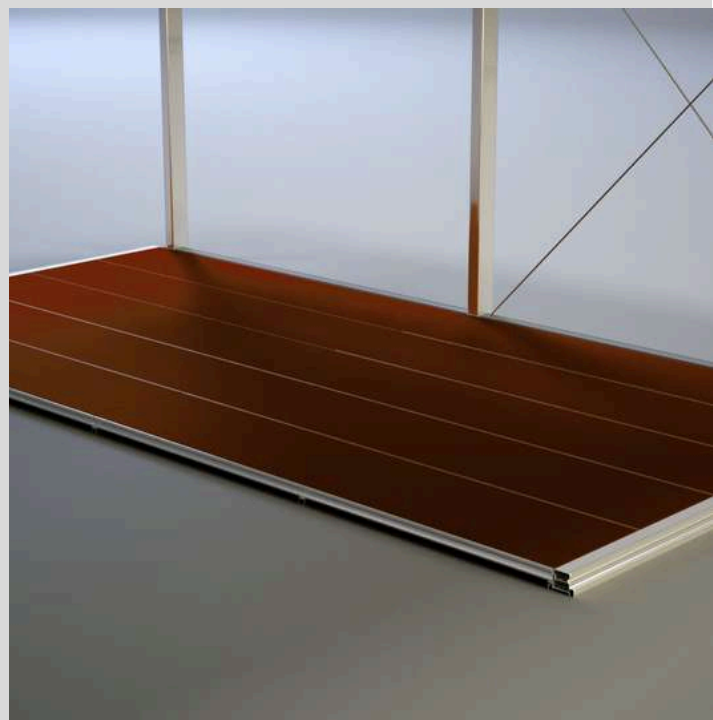
## Flooring

### Cassette Flooring

The visually appealing cassette floor is available with different wooden coverings and, with its lightweight aluminum substructure, has a traffic load of 350 and 500 kg/m<sup>2</sup>.

### Heavy Duty Flooring

The heavy-duty floor is the most efficient floor system in our range, which can be quickly installed using a forklift or crane. In addition, it has a low transport volume compared to other flooring systems.





# E

---

## Doors & Accessories

### Single-leaf door / double-leaf door

Entrances and exits in various facade systems, the single and double-leaf doors can be installed in our structure systems and visually adjusted to match the rest of the side paneling.

### Indoor/outdoor ramp

To enable barrier-free access to our structure systems, we offer various entry and exit ramps made of steel and aluminum.

### Overhead Door Shelter

Various canopies are available separately from our doors, which visually complete your entrance area and offer weather protection for this area.

### Stairs

For multi-storey skyline systems, we offer indoor and outdoor stairs in a variety of sizes, shapes and designs.

### Transport Racks

Our transport racks offer optimal protection for loading and storing all structure and accessory parts.





**HR** STRUCTURES

Skyline Structure

Werribee Motors

10.00m x 15.00m x 4.00m





**HR** STRUCTURES

Skyline Structure

Werribee Motors

Glass Facade with Black  
Powder-Coated Frame

# C

## Heavy Duty Contemporary Design

---

The Cargo structure is a modular industrial building designed for the industrial sector. The Cargo is both aesthetic and functional, allowing you to create safe and efficient workplaces that adhere to stringent regulations, and international building code requirements (IBC).

This makes the Cargo Structure an excellent option for businesses within the heavy industrial industry that require economical structures fast. Perfect for storage, logistics, transport, waste management and recycling, agriculture, warehouses, industrial estates and more.

- Frames made from steel and aluminium
- Big enough and tough enough for heavy duty vehicle and equipment bays
- No foundations – any stable level ground will do
- As secure as site built
- Portable – setup / takedown in a matter of weeks
- Environmentally friendly
- The building's potential to repurpose allows for high resale values





# E

- Bracing System: Internal high-level bracing giving open & clear span spaces.
- Frame Construction: Hard pressed 4 groove aluminium cube profile.
- Profile Size: Profile sizes relative to situation requirements.
- Roof Covers: Steel Sheet, Trapezoidal Sheet, Thermo PVC system, Insulated Sandwich Panel, Single Layer PVC, Underlay PVC Cover or Parapet system
- Wind Loading: Structures are all calculated to withstand wind loading based on the physical site location, and to meet Australian and European safety standards.
- U-Values:
  1. Roofs – 1.5 W/m<sup>2</sup>K
  2. Walls & Gables – 0.44 W/m<sup>2</sup>K

## Specifications

<b>Span Width</b> 5.00m - 30.00m	<b>Length</b> Unlimited in 5.00m bays	<b>Side Height</b> Up to 6.30m	<b>Wind Load</b> To site specifics	<b>Custom</b> Fixtures & Dimensions available	<b>Anchoring</b> As site specifically requires

## ROOF OPTIONS

- Steel Sheet
- Trapezoidal Sheet
- Thermo PVC System
- Insulated Sandwich Panel
- Single Layer PVC
- Underlay PVC Cover
- Parapet system

## WALL OPTIONS

- Steel Sheet
- Trapezoidal Sheet
- Insulated Sandwich Panel
- Single Layer PVC
- Underlay PVC Cover
- Skyline Glass Elements

## FLOOR OPTIONS

- Steel Substructure with Wooden Laying Panels
- Heavy Duty Flooring

## ANCILLIARIES

- Indoor/Outdoor Ramp
- Gutter/Downpipe
- HVAC
- Internal/External Stairs
- Overhead Door Canopy
- Ventilation Panels
- Mezzanine Floor
- Internal Partitions
- Signage Parapets
- Wet areas
- Guard Rail
- Lighting
- HVAC



# C

---

## Roof & Side Panels

### Single-layer PVC Covers

The flame-retardant PVC Covers according to DIN 4102-B1 is suited for roofs or insulated structures. Available in translucent and opaque in a variety of colours.

### Underlay PVC Covers

Underlay PVC Covers are a lighter material under the outer single-layer PVC Covers or the trapezoidal sheet to absorb and drain away any condensation that may arise.

### Thermal Roof PVC Covers

The air-filled double-shell roof PVC Covers offers additional insulation and condensation protection in the roof area.

The PVC Covers, flame-retardant according to DIN 4102-B1, is translucent and opaque and available in a variety of colours.

### Trapezoidal sheet

The strip-galvanized and coated trapezoidal sheet is best suited for roofing and insulated structures. A variety of colours available, and a fleece coating in the roof area to prevent condensation.

### Sandwich Panel

The insulated sandwich element is suited for insulated structures. Available in different material thicknesses and suitable insulation values with PUR foam or mineral wool filling. Different exterior colours are also possible.



# C

---

## Roller Doors

### PVC Covers

Sliding PVC Covers are used in insulated structures and can be used flexibly thanks to their manual and easy handling.

### Sliding Roller

The manually operated sliding roller offers increased theft protection compared to the PVC Covers sliding roller, is designed for use in insulated structures.

### Roller Shutter

The electrically operated roller shutter has light insulation and is easy to operate thanks to the control.

### Sectional Door

The electrically or manually operated sectional door, which has increased thermal insulation compared to roller doors, is ideal for use in insulated structures. Options such as window sections or integrated doors are also available.



# C

---

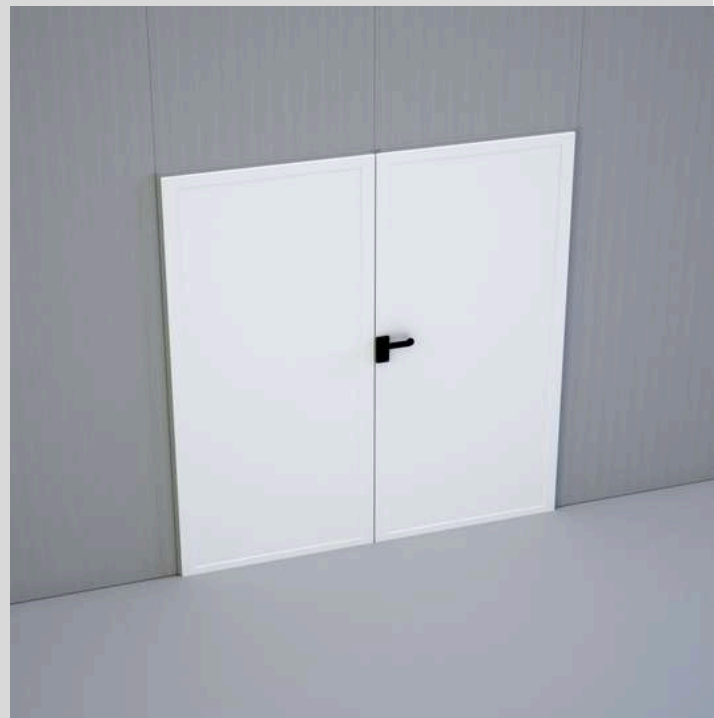
## Entrance Doors

### Single Leaf Door

Individually usable staff or escape door.

### Double Leaf Door

Like the single-leaf door, the double-leaf door can be used individually as a staff or escape door and can also be filled with glass.





# C

---

## Windows

### Single-leaf / 2-leaf / 4-leaf windows

Various windows can be integrated into the structure cladding on the sides to provide light and fresh air.

### Display Window

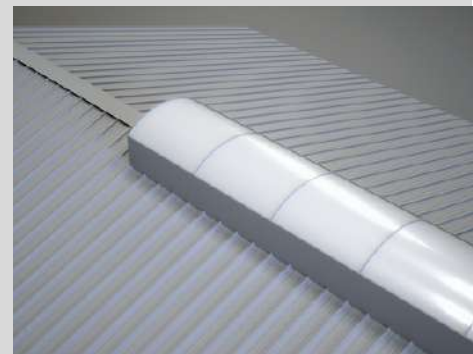
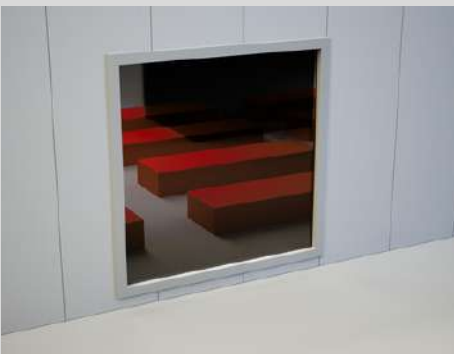
Approx. 2.2 x 2.50m. Our display windows serve as the greatest possible source of light and are ideal for sales and exhibition rooms.

### Dome Light

The dome light or ridge light strip is used to provide direct light in the roof area and additional air supply. Further options such as RWA equipment are available.

### Wall Light Strip Polycarbonate

Approx. 1.0 x 4.0m. The wall light strip is the cost-effective alternative to glass elements and is usually installed in the wall cladding under the eaves area.



# C

## Miscellaneous

### Lighting

Various lighting systems including electronics are available for additional lighting in the interior of the structure.

### Heating

Various mobile heating systems enable simple and energy-saving heating of the industrial structure.

### Gaurd Rail

The guardrail protects the industrial structure from external influences such as approaching forklifts and trucks.

### Rain Gutter

In order to drain away rainwater in a controlled manner, our rain gutter including the associated downpipes offers the ideal benefit.

### Stairs

For multi-storey systems, we offer indoor and outdoor stairs in a variety of sizes, shapes and designs.

### Internal Partitions

In order to divide the industrial structure into several sections, internal gable partitions can be installed. The individual subdivisions can be connected using doors and rollers.



# C

---

## Anchoring

### Soil Nails

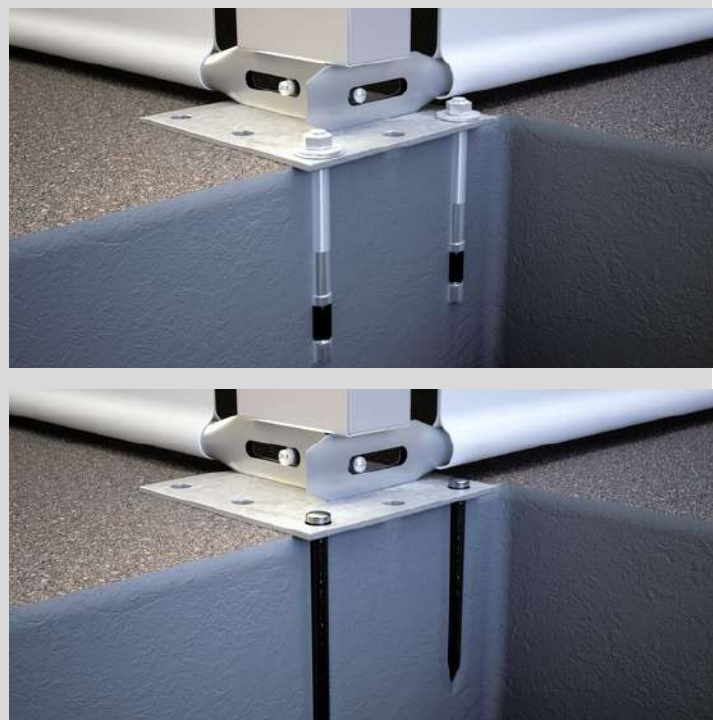
Soil nails are the simplest and most cost-effective solution for temporary anchoring, as this variant can be used to fasten our industrial structures to a wide variety of surfaces without foundations.

### Dowels

Dowels are mostly used in connection with permanent buildings and concrete foundations to ensure a secure and long-lasting stability of the structure.

### Floor Sealing

When closing the floor using a facade and end plate, there are different variants and options for sealing. Depending on the surface, appropriate finishing options are available.







# HR STRUCTURES

Cargo Custom Structure  
ARB 4x4 Accessories

15.00m x 40.00m x 6.30m





# HR STRUCTURES

Cargo Custom Structure  
ARB 4x4 Accessories

Warehouse | Showroom |  
Retail Space with Mezzanine





**HR** STRUCTURES

E E  
E

15m x 25m x 6.3m



**HR** STRUCTURES

G G

15m x 25m x 5.3m





**HR** STRUCTURES

M M

M

15m x 30m x 3m



# E

## Large Scale Commercial Construction

---

Mega Structures are designed with a ridge height of up to 8.00m and span from 10.00m to 70.00m, providing sufficient space for storing mining machinery or large aircraft.

With its strong aluminium profile and fireproof wall panels, these structures are durable and strong. Structures are calculated to withstand wind loading based on the physical site location, and to meet Australian and European safety standards.

The Mega structure can be used in many commercial applications – including airport terminals, maintenance facilities or mining accommodation, transport logistics, shipping ports, railway stations, horticulture, agriculture – their flexible configurations adapt well to many large-scale commercial developments.



## Structure Profile

- Bracing System: Internal high-level bracing giving open & clear span spaces.
- Frame Construction: Hard pressed 4 groove aluminium cube profile.
- Profile Size: Profile sizes relative to situation requirements.
- Roof Covers: Single Layer PVC Cover, Polyglass PVC Roof Cover, Thermo Inflatable Roof, Parapet System.
- Wind Loading: Structures are all calculated to withstand wind loading based on the physical site location, and to meet Australian and European safety standards.
- U-Values:
  1. Roofs – 1.5 W/m<sup>2</sup>K
  2. Walls & Gables – 0.44 W/m<sup>2</sup>K

## Specifications



**Span Width**  
10.00m - 70.00m



**Length**  
Unlimited in 5.00m bays



**Side Height**  
Up to 8.00m



**Wind Load**  
To site specifics



**Custom**  
Fixtures & Dimensions available



**Anchoring**  
As site specifically requires



**Loads**  
Suspended loads up to 6 tonnes



**Area**  
Free standing area over 5000 sqm

### ROOF OPTIONS

Single Layer PVC Cover  
Polyglass PVC Roof Cover  
Thermo Inflatable Roof  
Parapet System

### WALL OPTIONS

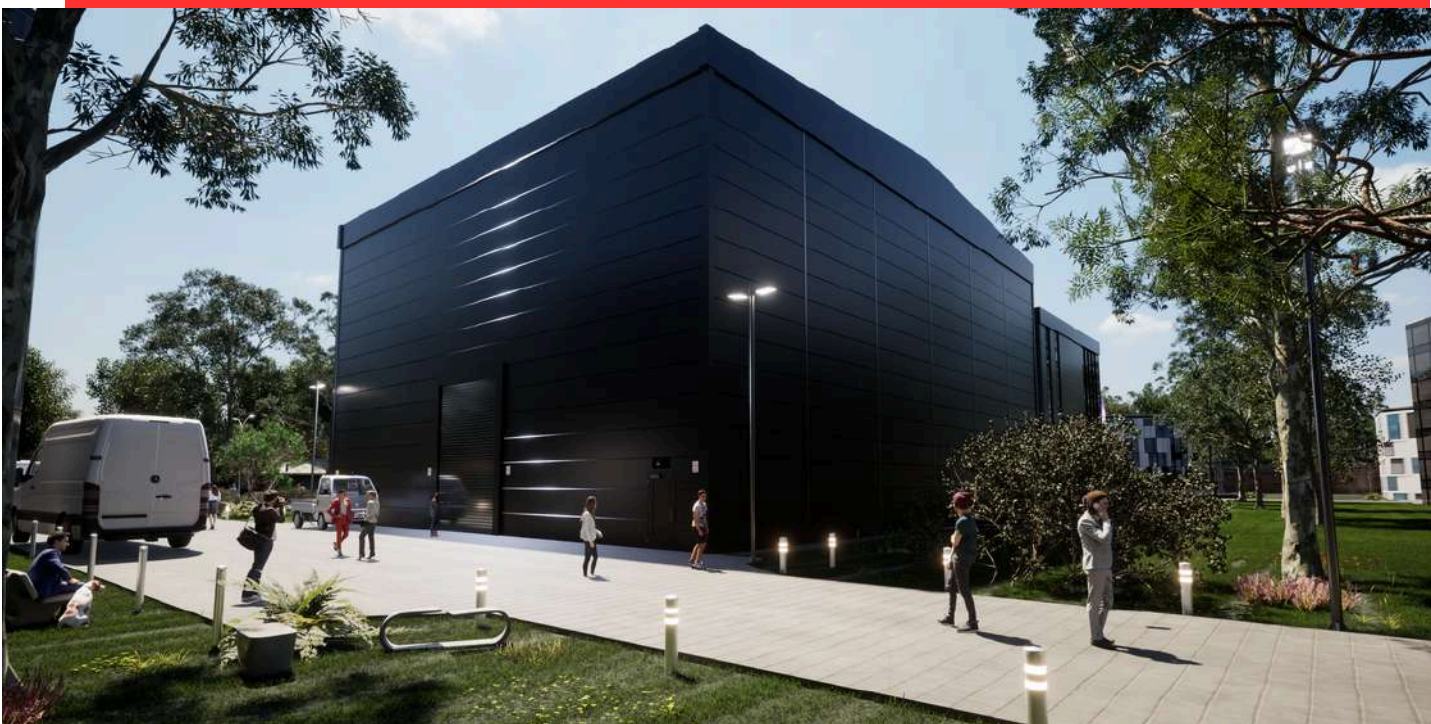
Vinyl Façade  
Insulated Façade  
Glass Façade  
Glass Sliding Walls  
PVC Side Walls  
Polyglass Side Walls

### FLOOR OPTIONS

Heavy Duty Flooring System  
Steel Substructure with Wooden Laying Panels  
Cassette Flooring

### ANCILLIARIES

Various door types  
Various window types  
Indoor/Outdoor Ramp  
Gutter/Downpipe  
HVAC  
Internal/External Stairs  
Overhead Door Canopy  
Internal Partitions  
Ventilation Panels  
Signage Parapets  
Wet areas  
Guard Rail



# E

## Roof & Wall Options

### Single-layer roof PVC Covers / Gable white/translucent

The flame-retardant PVC Covers according to DIN 4102-B1 is best suited for roofs or insulated structures. The single-layer PVC Covers is available in both translucent and opaque colours in a wide variety of colours.

### Trapezoidal sheet

The strip-galvanized and coated trapezoidal sheet is best suited for roofing and insulated structures. A fleece coating is placed in the roof area to prevent condensation.

### Polyglass roof PVC Covers / Gable white/translucent

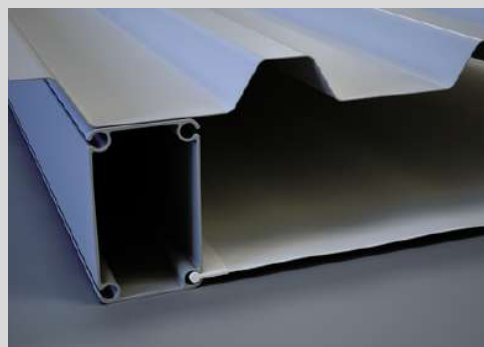
Our transparent PVC Covers allows for natural light and is an exceptional alternative to the white PVC Covers.

### Thermal Roof PVC Covers

The air-filled double-shell roof PVC Covers offers additional insulation and condensation protection in the roof area.

### Sandwich Panel

The insulated sandwich element is available in different material thicknesses. Insulation values with PUR foam or mineral wool filling. Different exterior colours available.



# E

---

## Side Panels

### Vinyl Facade

The Vinyl facade ensures a higher-quality side appearance and, thanks to its strength, offers better burglary and weather protection.

### Insulated Facade

The insulated facade not only ensures a higher-quality side appearance, but in addition to its better protection against burglary and weather, it also offers additional thermal insulation.

### Glass Facade

Available in a variety of designs, such as vinyl or aluminum frame, uninsulated or insulated glass, in various colours and tints.

### Glass Sliding Walls

Entrances and exits or window elements in various facade systems, the glass sliding walls can be installed in our facade systems and visually adjusts to match the side paneling.

### PVC Side Walling

The flame-retardant PVC Covers according to DIN 4102-B1 is available in a range of colours, both translucent and opaque.

### Polyglass Side Awning

Our transparent covers for even more light is an exceptional alternative to the white PVC Covers.





# E

---

## Flooring

### Cassette Flooring

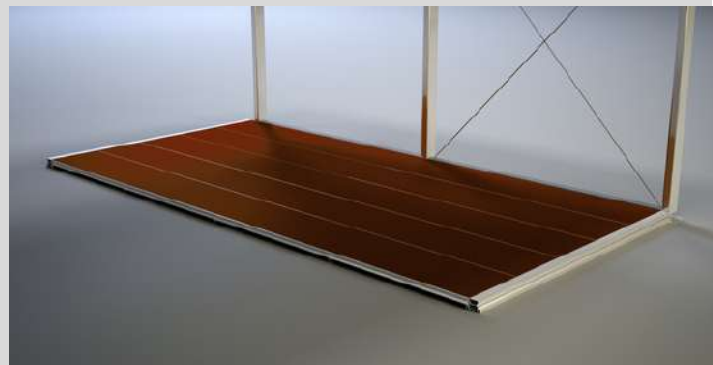
The visually appealing cassette floor is available with different wooden coverings and, with its lightweight aluminum substructure, has a traffic load of 350 and 500 kg/m<sup>2</sup>.

### Heavy Duty Flooring

The heavy-duty floor is the most efficient floor system in our range, which can be quickly installed using a forklift or crane. In addition, it has a low transport volume compared to other flooring systems.

### Steel substructure with wooden laying panels

The steel substructure with wooden laying panels is a proven, solid and cost-effective flooring system that is available with a traffic load of 350 and 500 kg/m<sup>2</sup>.





# E

---

## Doors & Accessories

### Single-leaf door / double-leaf door

Entrances and exits in various facade systems, the single and double-leaf doors can be installed in our structure systems and visually adjusted to match the rest of the side paneling.

### Indoor/outdoor ramp

To enable barrier-free access to our structure systems, we offer various entry and exit ramps made of steel and aluminum.

### Overhead Door Shelter

Various canopies are available separately from our doors, which visually complete your entrance area and offer weather protection for this area.

### Transport Racks

Our transport racks offer optimal protection for loading and storing all structure and accessory parts.





# HR STRUCTURES

Mega Structure Concept  
Sunshine Coast Airport

55.00m x 80.00m x 8.00m



**HR** STRUCTURES

Mega Structure Concept  
Hamilton Airport

Thermo Roof | 40.00m Hangar  
Door



# E

## 5 Star Quality for any application

---

The Vegas Structure provides unique functionality and creativity. It offers one of the most advanced and aesthetically appealing modular hospitality structures on the market. Our size and design options make the Vegas Structure a popular hospitality solution, including restaurants, cafes, as well as outdoor installations at tradeshow and other events.

Visually stunning and functionally adaptable, the Vegas Structure provides the optimum fit when good visibility is of prime importance. This modular structure sets the standard in the world of global events and hospitality.

Amplify your presence at your next trade show or industry event with the Vegas Structure. Its flexibility in design makes it perfect for outdoor event space, VIP lounge, product activations, or exhibition area.

This remarkable structure makes it an unforgettable space.

The Vegas structure is very durable and perfect for promotional space, commercial retail, cafes and restaurants. Plus, you can include wet areas, personnel doors, elegant entrance doors and so much more.

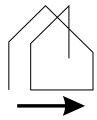




## Structure Profile

- Bracing System: Internal high-level bracing giving open & clear span spaces.
- Frame Construction: Hard pressed 4 groove aluminium cube profile.
- Profile Size: Profile sizes relative to situation requirements.
- Roof Covers: Single Skin PVC, Thermo Inflatable Roof, Parapet System
- Wind Loading: Structures are all calculated to withstand wind loading based on the physical site location, and to meet Australian and European safety standards.
- Walling: Facade walling system, vertical or horizontal glass walls. PVC soft walling relative to the situation requirement.
- U-Values:
  1. Roofs – 1.5 W/m<sup>2</sup>K
  2. Walls & Gables – 0.44 W/m<sup>2</sup>K

## Specifications



**Span Width**  
5.00m - 15.00m



**Length**  
Unlimited in  
5.00m bays



**Side Height**  
3.30m



**Custom**  
Fixtures & Dimensions  
available

### ROOF OPTIONS

Single-skin roof cover - Flame-resistant pursuant to DIN 4102-B1. Available in transparent or opaque.

Thermal roof cover - Double-skin roof cover, which is filled with air, provides additional insulation and condensation protection in the roof area. Flame-retardant pursuant to DIN 4102-B1. Available in transparent or opaque.

Parapet - Made of Alucobond or PVC material provides the classic "cube characteristic" with its own customisable look.

### WALL OPTIONS

Vinyl Façade  
Insulated Façade  
Glass Façade  
Glass Sliding Walls  
PVC Side Walls  
Polyglass Side Walls

### FLOOR OPTIONS

Cassette Floor  
Heavy Duty Floor

### ANCILLIARIES

Signage parapets  
Various door types  
Various window types  
Indoor/Outdoor Ramp  
Gutter/Downpipe  
HVAC  
Overhead Door Canopy  
Ventilation Panels  
Balustrades  
Disability access  
Wet areas



# E

---

## Roof Cladding

### Single-Layer Roof PVC Covers

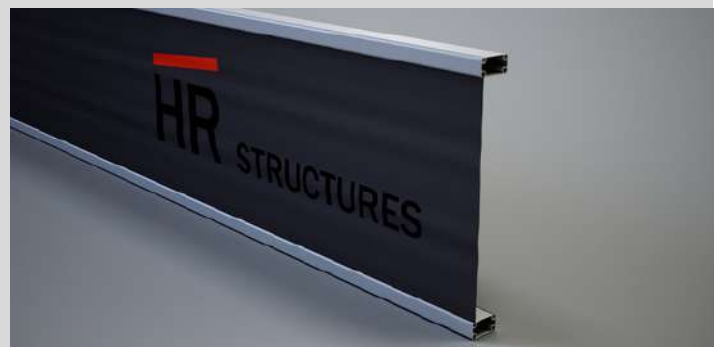
The PVC Covers, which is flame-retardant according to DIN 4102-B1, is both translucent and opaque and available in a wide variety of colours.

### Thermal Roof PVC Covers

The air-filled double-shell roof PVC Covers provides additional insulation and condensation protection in the roof area. The PVC Covers, which is flame-retardant according to DIN 4102-B1, is both translucent and opaque and is available in a wide variety of colours.

### Attica

The parapet made of Alucobond or PVC material gives the classic “cube character” with its own individually customisable look.



# E

---

## Side Panels

### Vinyl Facade

The Vinyl facade ensures a higher-quality side appearance and, thanks to its strength, offers better burglary and weather protection.

### Insulated Facade

The insulated facade not only ensures a higher-quality side appearance, but in addition to its better protection against burglary and weather, it also offers additional thermal insulation.

### Glass Facade

Available in a variety of designs, such as vinyl or aluminum frame, uninsulated or insulated glass, in various colours and tints.

### Glass Sliding Walls

Entrances and exits or window elements in various facade systems, the glass sliding walls can be installed in our facade systems and visually adjusts to match the side paneling.

### PVC Side Walling

The flame-retardant PVC Covers according to DIN 4102-B1 is available in a range of colours, both translucent and opaque.

### Polyglass Side Awning

Our transparent covers for even more light is an exceptional alternative to the white PVC Covers.





# E

---

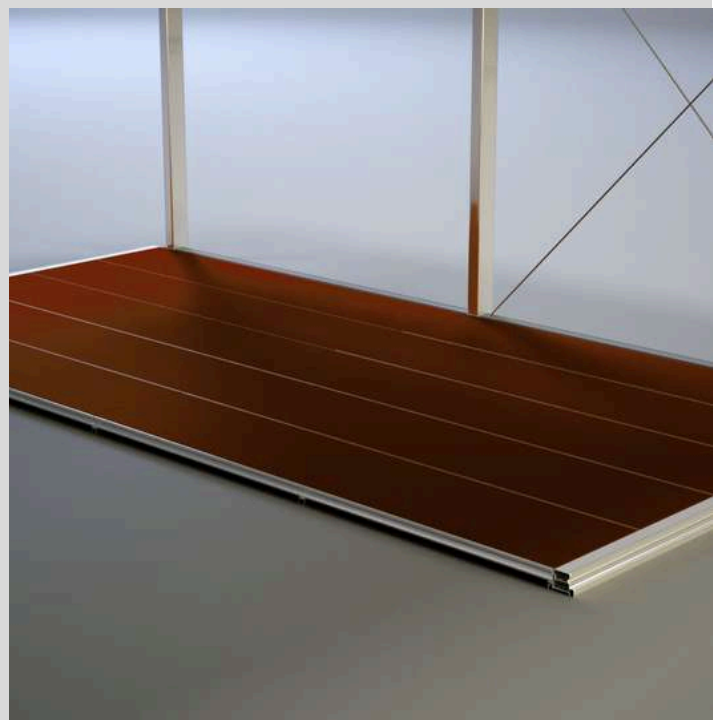
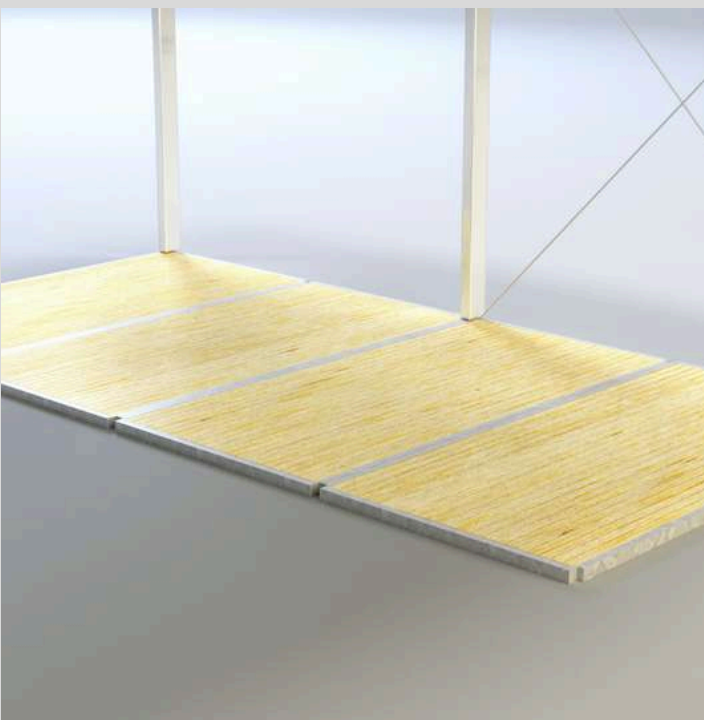
## Flooring

### Cassette Flooring

The visually appealing cassette floor is available with different wooden coverings and, with its lightweight aluminum substructure, has a traffic load of 350 and 500 kg/m<sup>2</sup>.

### Heavy Duty Flooring

The heavy-duty floor is the most efficient floor system in our range, which can be quickly installed using a forklift or crane. In addition, it has a low transport volume compared to other flooring systems.



# E

---

## Doors & Accessories

### Single-leaf door / double-leaf door

Entrances and exits in various facade systems, the single and double-leaf doors can be installed in our structure systems and visually adjusted to match the rest of the side paneling.

### Indoor/outdoor ramp

To enable barrier-free access to our structure systems, we offer various entry and exit ramps made of steel and aluminum.

### Overhead Door Shelter

Various canopies are available separately from our doors, which visually complete your entrance area and offer weather protection for this area.

### Transport Racks

Our transport racks offer optimal protection for loading and storing all structure and accessory parts.





**HR** STRUCTURES

Vegas Structure  
The Jetty CBR

15.00m x 20.00m x 3.30m





**HR** STRUCTURES

Vegas Structure

The Jetty CBR

Shallow Pitched Roof | Black  
Powder-Coated Frame



# H

## Durable Structures for any Occassion

---

The Perth Structure is very durable and can be used as promotional space, commercial retail, cafes, and for impressive product launches. Plus, you can include wet areas, personnel doors, elegant entrance doors and so much more. The Perth incorporates stunning panoramic framed glass walls to blend the outdoor/indoor experience. These impressive structures do not require a conventional foundation, they can be installed on existing level ground – perfect for any event type, including weddings and trade fairs.

These structures are a fantastic way to create event space without the need of a permanent venue. We've worked with wedding venues, retailers, festivals, and event management companies to provide the best solutions for their needs. The Perth Structure comes in a range of high-grade materials, including soft walled PVC and hard walled ISO panel.

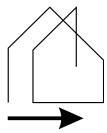
The spacious interior allows you to present your product or service at its best, and with the option of a clear roof allows for the greatest impact.



## Structure Profile

- Bracing System: Internal high-level bracing giving open & clear span spaces.
- Frame Construction: Hard pressed 4 groove aluminium cube profile.
- Profile Size: Profile sizes relative to situation requirements.
- Roof Covers: Single skin PVC
- Wind Loading: Structures are all calculated to withstand wind loading based on the physical site location, and to meet Australian and European safety standards.
- Walling: PVC Soft Wall, ABS solid wall, Framed Glass
- U-Values:
  1. Roofs – 1.5 W/m<sup>2</sup>K
  2. Walls & Gables – 0.44 W/m<sup>2</sup>K

## Specifications



**Span Width**  
5.00m - 25.00m



**Length**  
Unlimited in 5.00m bays



**Side Height**  
4.00m



**Custom**  
Fixtures & Dimensions available



**Purchase**  
Request a Quote

### ROOF OPTIONS

Single-skin roof cover - Flame-retardant pursuant to DIN 4102-B1. Available in transparent or opaque in both A Frame and Semi Curve Frame roof design. Roof cover options are Clear/Transparent, Translucent and Opaque single layer or alternatively Thermo twin layer covers in Translucent and Opaque PVC.

### WALL OPTIONS

PVC Soft Wall  
ABS Solid wall  
Framed Glass

### FLOOR OPTIONS

Cassette Flooring

### ANCILLIARIES

Ventilation panels  
Signage parapets  
Various door types  
Various window types  
Atrium  
Balustrades  
Disability access  
Wet areas  
HVAC





# E

---

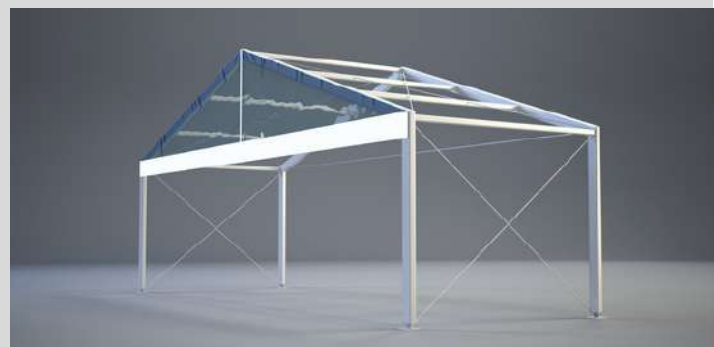
## Roof Cladding

### Single-layer roof PVC Covers / Gable white/translucent

The flame-retardant PVC Covers according to DIN 4102-B1 is best suited for roofs or insulated structures. The single-layer PVC Covers is available in both translucent and opaque colours in a wide variety of colours.

### Polyglass roof PVC Covers / Gable

Our transparent PVC Covers allows for natural light and is an exceptional alternative to the white PVC Covers.



# E

---

## Side Panels

### Vinyl Facade

The Vinyl facade ensures a higher-quality side appearance and, thanks to its strength, offers better burglary and weather protection.

### Insulated Facade

The insulated facade not only ensures a higher-quality side appearance, but in addition to its better protection against burglary and weather, it also offers additional thermal insulation.

### Glass Facade

Available in a variety of designs, such as vinyl or aluminum frame, uninsulated or insulated glass, in various colours and tints.

### Glass Sliding Walls

Entrances and exits or window elements in various facade systems, the glass sliding walls can be installed in our facade systems and visually adjusts to match the side paneling.

### PVC Side Walling

The flame-retardant PVC Covers according to DIN 4102-B1 is available in a range of colours, both translucent and opaque.

### Polyglass Side Awning

Our transparent covers for even more light is an exceptional alternative to the white PVC Covers.



# E

---

## Flooring

### Cassette Flooring

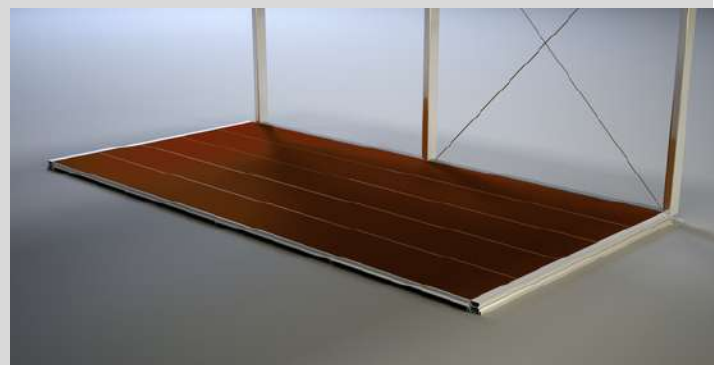
The visually appealing cassette floor is available with different wooden coverings and, with its lightweight aluminum substructure, has a traffic load of 350 and 500 kg/m<sup>2</sup>.

### Heavy Duty Flooring

The heavy-duty floor is the most efficient floor system in our range, which can be quickly installed using a forklift or crane. In addition, it has a low transport volume compared to other flooring systems.

### Steel substructure with wooden laying panels

The steel substructure with wooden laying panels is a proven, solid and cost-effective flooring system that is available with a traffic load of 350 and 500 kg/m<sup>2</sup>.





# E

---

## Doors & Accessories

### Single-leaf door / double-leaf door

Entrances and exits in various facade systems, the single and double-leaf doors can be installed in our structure systems and visually adjusted to match the rest of the side paneling.

### Indoor/outdoor ramp

To enable barrier-free access to our structure systems, we offer various entry and exit ramps made of steel and aluminum.

### Overhead Door Shelter

Various canopies are available separately from our doors, which visually complete your entrance area and offer weather protection for this area.

### Transport Racks

Our transport racks offer optimal protection for loading and storing all structure and accessory parts.



# Summerset Retirement Village

Perth Structures are superior to the classic marquee, efficient to operate, easy to maintain and highly durable.



Summerset Retirement Village in Cranbourne North provides relaxing retirement living with easy access to supermarkets and shopping centres that include a medical centre, cafés and restaurants. Summerset wanted a convenient recreation room to add to the village's new spacious homes in the stunning resort-style facilities.

HR Structures provided a 12.00m x 20.00m x 3.00m Perth Structure with a curved Thermo roof, which was chosen for its excellent insulation and climate control qualities. The structure included a unisex toilet facility, open plan kitchen with white gloss cabinets.

Now the residents of Summerset Cranbourne North have a great space to eat, chat and play.



## SPECIFICATIONS

- 12m x 20m x 3m
- Curved roof
- Thermo roof system
- 2 double doors
- 8 bays Glass walling
- 3.5m bays of Iso panel insulated wall
- Disable unisex toilets
- Provisions for kitchen

# E

## Unmatched by any other Style of Marquee

---

Whether you are looking to buy a large marquee or a permanent modular solution for outdoor events, corporate or wedding parties, festivals or trade shows, our marquee range will perfectly suit your needs.

These large-size event marquees are customisable to virtually any length with a span width from 3.00m to 60.00m with a bay distance of both 3.00m and 5.00m, and a side height up to 4.00m.

Our marquee range is extensive and versatile – we can produce a variety of compatible marquees that are engineered and designed to seamlessly integrate with temporary structure systems of other major suppliers. This grants you the freedom to choose from a range of suppliers without compromising on quality, availability, or pricing.

At HR Structures, we manufacture event marquees for sale that offer exceptional strength, durability, and coverage that is unmatched by any other style of marquees on the Australian market.

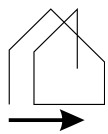




## Structure Profile

- Bracing System: Internal high-level bracing giving open & clear span spaces.
- Frame Construction: Hard pressed 4 groove aluminium cube profile.
- Profile Size: Profile sizes relative to situation requirements.
- Roof Covers: Single Skin PVC, Polyglass PVC.
- Wind Loading: Structures are all calculated to withstand wind loading based on the physical site location, and to meet Australian and European safety standards.
- U-Values:
  1. Roofs – 1.5 W/m<sup>2</sup>K
  2. Walls & Gables – 0.44 W/m<sup>2</sup>K

## Specifications



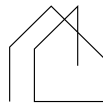
**Span Width**  
3.00m - 60.00m



**Length**  
Unlimited in 3.00m & 5.00m bays



**Side Height**  
4.00m



**Custom**  
Fixtures & Dimensions available



**Purchase**  
Request a Quote

### ROOF OPTIONS

Single-skin roof cover - Flame-resistant pursuant to DIN 4102-B1. Available in transparent, translucent, or opaque. Flame-retardant pursuant to DIN 4102-B1. Available in transparent, translucent or opaque.  
Polyglass PVC: Transparent PVC Covers allows for natural light and is an exceptional alternative to the white PVC Covers.

### WALL OPTIONS

Vinyl Facade  
Insulated Facade  
Glass Facade  
Glass Sliding Walls  
PVC Side Walls  
Polyglass Side Walls

### FLOOR OPTIONS

Cassette Floor  
Heavy Duty Floor  
Steel Substructure with Wooden Laying Panels

### ANCILLIARIES

Ventilation panels  
Signage parapets  
Various door types  
Various window types  
Balustrades  
Gutter/Downpipes  
Disability access  
Wet areas  
HVAC



# E

---

## Roof Cladding

### Single-layer roof PVC Covers / Gable white/translucent

The flame-retardant PVC Covers according to DIN 4102-B1 is best suited for roofs or insulated structures. The single-layer PVC Covers is available in both translucent and opaque colours in a wide variety of colours.

### Polyglass roof PVC Covers / Gable

Our transparent PVC Covers allows for natural light and is an exceptional alternative to the white PVC Covers.



# E

---

## Side Panels

### Vinyl Facade

The Vinyl facade ensures a higher-quality side appearance and, thanks to its strength, offers better burglary and weather protection.

### Insulated Facade

The insulated facade not only ensures a higher-quality side appearance, but in addition to its better protection against burglary and weather, it also offers additional thermal insulation.

### Glass Facade

Available in a variety of designs, such as vinyl or aluminum frame, uninsulated or insulated glass, in various colours and tints.

### Glass Sliding Walls

Entrances and exits or window elements in various facade systems, the glass sliding walls can be installed in our facade systems and visually adjusts to match the side paneling.

### PVC Side Walling

The flame-retardant PVC Covers according to DIN 4102-B1 is available in a range of colours, both translucent and opaque.

### Polyglass Side Awning

Our transparent covers for even more light is an exceptional alternative to the white PVC Covers.





# E

---

## Flooring

### Cassette Flooring

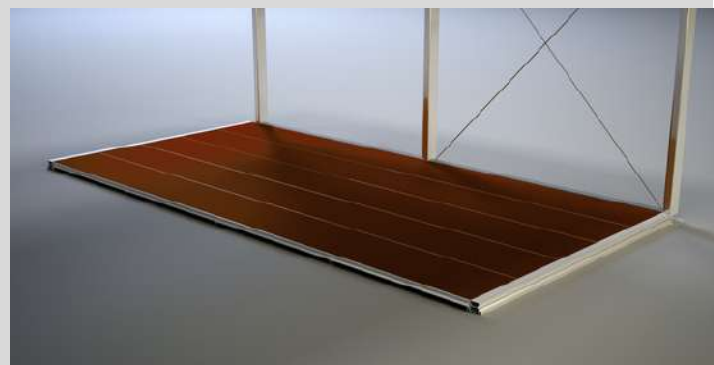
The visually appealing cassette floor is available with different wooden coverings and, with its lightweight aluminum substructure, has a traffic load of 350 and 500 kg/m<sup>2</sup>.

### Heavy Duty Flooring

The heavy-duty floor is the most efficient floor system in our range, which can be quickly installed using a forklift or crane. In addition, it has a low transport volume compared to other flooring systems.

### Steel substructure with wooden laying panels

The steel substructure with wooden laying panels is a proven, solid and cost-effective flooring system that is available with a traffic load of 350 and 500 kg/m<sup>2</sup>.



# E

---

## Doors & Accessories

### Single-leaf door / double-leaf door

Entrances and exits in various facade systems, the single and double-leaf doors can be installed in our structure systems and visually adjusted to match the rest of the side paneling.

### Indoor/outdoor ramp

To enable barrier-free access to our structure systems, we offer various entry and exit ramps made of steel and aluminum.

### Overhead Door Shelter

Various canopies are available separately from our doors, which visually complete your entrance area and offer weather protection for this area.

### Transport Racks

Our transport racks offer optimal protection for loading and storing all structure and accessory parts.





**HR** STRUCTURES

Marquee

Scrub Hill Wedding Venue

9.00m x 15.00m with Black  
Powder-Coated Frame





**HR** STRUCTURES

Marquee

Scrub Hill Wedding Venue

Glass Façade | Double Glass  
Entrance Doors

## Your Innovative Partner in Modular Building

Modular buildings provide better opportunities for companies interested in greening the footprint of the building construction process, as well as the impacts of recycling the building after it's complete. As modular structures deliver positive environmental outcomes, then modular construction can be an ideal fit for any company looking for a flexible, renewable, and sustainable method of building.

Modular construction is a highly streamlined process that can see project times reduced by up to 50% as the structure components are manufactured offsite. And the insulated structure ensures a more consistent R-value rating (the measure of thermal resistance).

Modular structures are leading the way to reduce the extraction of new material resources, demolition waste, construction time and transportation costs, while ensuring that these structures have a new purpose beyond its planned lifespan.

Structures can be relocated, packed down in a matter of weeks and moved to another site. They can also be repurposed for different functions – including applications in the commercial and industrial sectors – their flexible configurations adapt well to different applications, such as offices, hospitals, warehouses, airport terminals, sporting facilities and many other large scale commercial developments.



”



N N N N

**HR** STRUCTURES





1800 505 144



sales-au@hr-structures.com



www.hrstructures.com.au



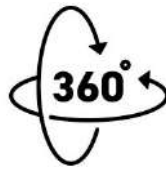
13 Pikkat Drive, Braemar NSW 2575



GERMAN  
ENGINEERED



CUSTOM  
SOLUTIONS



RELOCATABLE  
RECONFIGURABLE



PURCHASE  
OPTION



GREENER  
FUTURE

