



PERTH STRUCTURE



CONTENTS

— 03

INTRODUCTION

— 04

PRACTICAL PERTH

— 05

DURABLE STRUCTURES

— 06

A NEW EXPERIENCE

— 07

FEATURES

— 12

PROJECT

— 13

STRUCTURE TYPES

— 15

CONTACT

Introduction

HR Structures has one of the most technically advanced design & production centres in Europe.

HR Structures Australia are the official Australasian agent for HR Structures GmbH. A company that uniquely combines the customer care of a family run business with the service capacity of a global powerhouse.

Pioneering product innovation, quality and performance are at the heart of their products, people and processes, the German facility located in the Hessian town of Grebenhain, can produce up to 80,000 m² of new structures per week – ensuring fast, economical, factory-direct dispatch worldwide.

HR Structures GmbH state-of-the-art factory incorporates purpose-built production lines.

All structures are designed to comply with international design code criteria, including the USA-IBC2009/12 and AS/NZS standards.

All components used (roofs and walling systems) are designed to comply with international fire safety codes according to DIN 4102 B1, M2, BS5438/7837, USA NFPA701.



**Design.
Innovation.
Tradition.**

OUR PERTH

Practical Perth

When you need to Rely on Premium Quality

German engineering at its finest. The Perth Structure is crafted from the highest quality PVC, aluminum, and glass.

Perth modular buildings are structurally superior to the classic demountable, efficient to operate, easy to maintain and highly durable. Our innovative designs are flexible and adaptable, and can be fully customised to meet your needs, while benefiting from the speed, quality, and cost savings of our specialised off-site, prefabrication construction processes.

The Perth is available in A Frame or semi-curve roof design, with an eave height up to 4.00m. It is available in high grade PVC material including translucent, opaque, and white. The Perth can be fitted with an integral cassette flooring system. External walling options include soft PVC standard translucent to maximise light, opaque to provide total black-out or framed glass, perfect for optimising a view or feature, or ISO panels to give a more permanent appearance.



OUR PERTH

Durable Structures

Perth: For any Occassion

The Perth Structure is a fantastic way to create space without the need of a permanent venue. These impressive structures do not require a conventional foundation, they can be installed on existing level ground. Additionally, it can be free-standing or connected to existing buildings. Plus we offer provisions for electricity, lighting, heating, wet areas, personnel doors, elegant entrance doors and so much more.

The Perth is very versatile and can be used for many applications, including:

Education | Government Buildings | Emergency Services | Law Courts | Religious Institutions | Healthcare | Hospitals | Aged Care | Hospitality | Event Services | Weddings | Sports Clubs | Ice Rinks | Gymnasiums | Swimming Pool Enclosures | Exhibitions | Event Launches | Commercial Retail | Cafes | Mining | Camp Facilities | Accommodation | Mess Halls



OUR PERTH

A New Experience

The All-Rounder

The Perth Structure's innovative product design and the ability for the structure to be flat-packed, relocated, reconfigured, and reused, makes it a highly sustainable temporary building solution.

The Perth Structure can be extremely affordable. They come in a range of sizes and can be branded if required.

Many businesses pay thousands just to hire the Perth Structure, but if you are requiring the structure for the medium to long term, then it may be worth buying it outright. Ask us about our affordable pricing options.

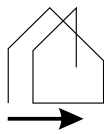


FEATURES

Structure Profile

- Bracing System: Internal high-level bracing giving open & clear span spaces.
- Frame Construction: Hard pressed 4 groove aluminium cube profile.
- Profile Size: Profile sizes relative to situation requirements.
- Roof Covers: Single skin PVC
- Wind Loading: Structures are all calculated to withstand wind loading based on the physical site location, and to meet Australian and European safety standards.
- Walling: PVC Soft Wall, ABS solid wall, Framed Glass
- U-Values:
 1. Roofs – 1.5 W/m²K
 2. Walls & Gables – 0.44 W/m²K

Specifications



Span Width
5.00m - 25.00m



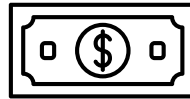
Length
Unlimited in 5.00m bays



Side Height
4.00m



Custom
Fixtures & Dimensions available



Purchase
Request a Quote

ROOF OPTIONS

Single-skin roof cover - Flame-retardant pursuant to DIN 4102-B1. Available in transparent or opaque in both A Frame and Semi Curve Frame roof design. Roof cover options are Clear/Transparent, Translucent and Opaque single layer or alternatively Thermo twin layer covers in Translucent and Opaque PVC.

WALL OPTIONS

PVC Soft Wall
ABS Solid wall
Framed Glass

FLOOR OPTIONS

Cassette Flooring

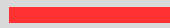
ANCILLIARIES

Ventilation panels
Signage parapets
Various door types
Various window types
Atrium
Balustrades
Disability access
Wet areas
HVAC



PERTH FEATURES

Accessories



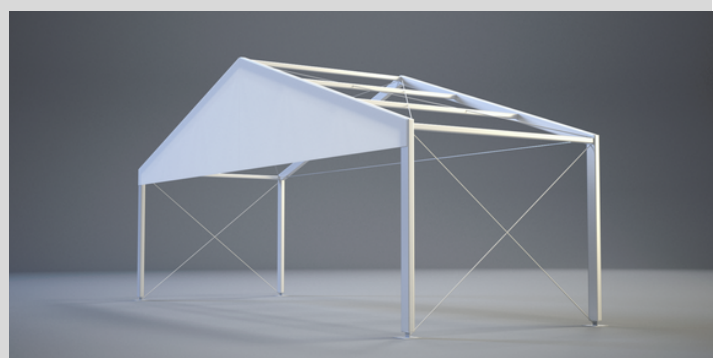
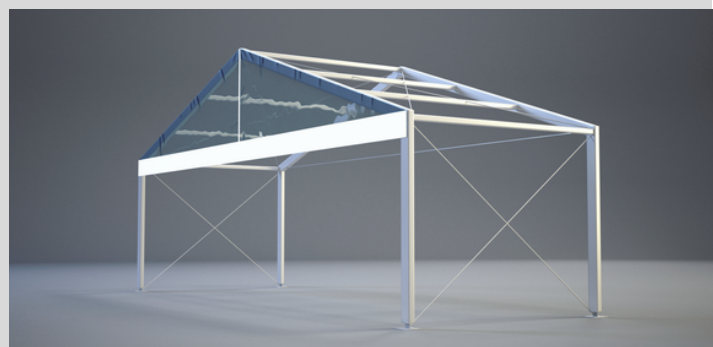
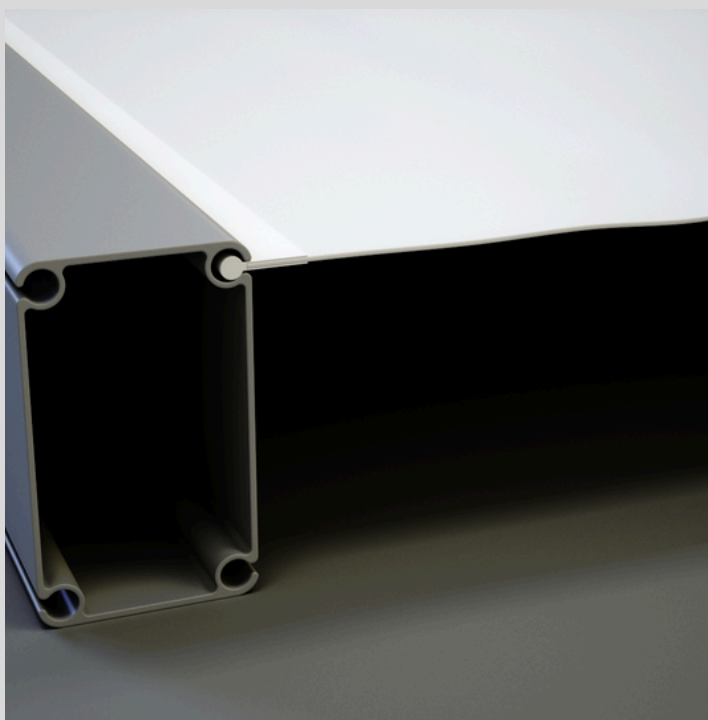
Roof Cladding

Single-layer roof PVC Covers / Gable white/translucent

The flame-retardant PVC Covers according to DIN 4102-B1 is best suited for roofs or insulated structures. The single-layer PVC Covers is available in both translucent and opaque colours in a wide variety of colours.

Polyglass roof PVC Covers / Gable

Our transparent PVC Covers allows for natural light and is an exceptional alternative to the white PVC Covers.



PERTH FEATURES

Accessories

Side Panels

Vinyl Facade

The Vinyl facade ensures a higher-quality side appearance and, thanks to its strength, offers better burglary and weather protection.

Insulated Facade

The insulated facade not only ensures a higher-quality side appearance, but in addition to its better protection against burglary and weather, it also offers additional thermal insulation.

Glass Facade

Available in a variety of designs, such as vinyl or aluminum frame, uninsulated or insulated glass, in various colours and tints.

Glass Sliding Walls

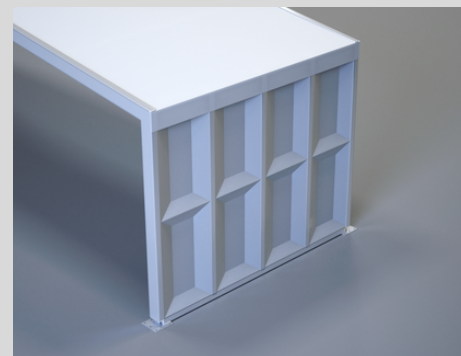
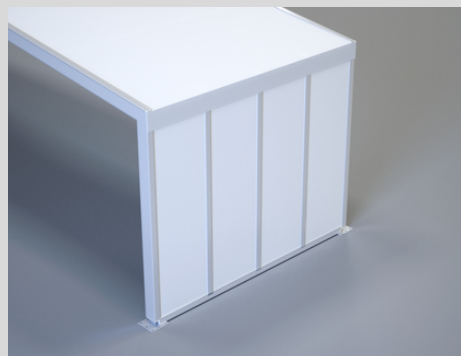
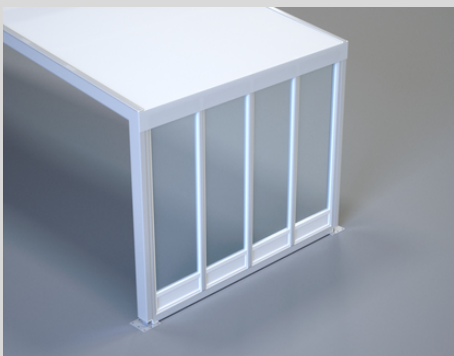
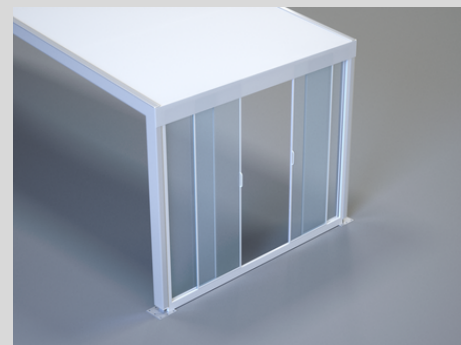
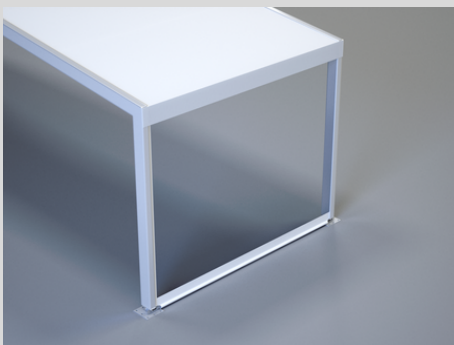
Entrances and exits or window elements in various facade systems, the glass sliding walls can be installed in our facade systems and visually adjusts to match the side paneling.

PVC Side Walling

The flame-retardant PVC Covers according to DIN 4102-B1 is available in a range of colours, both translucent and opaque.

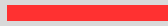
Polyglass Side Awning

Our transparent covers for even more light is an exceptional alternative to the white PVC Covers.



PERTH FEATURES

Accessories



Flooring

Cassette Flooring

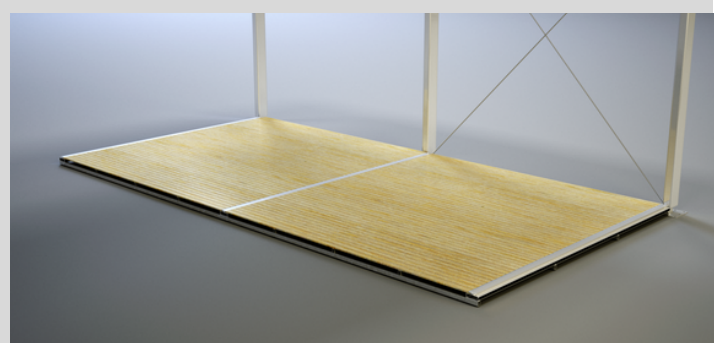
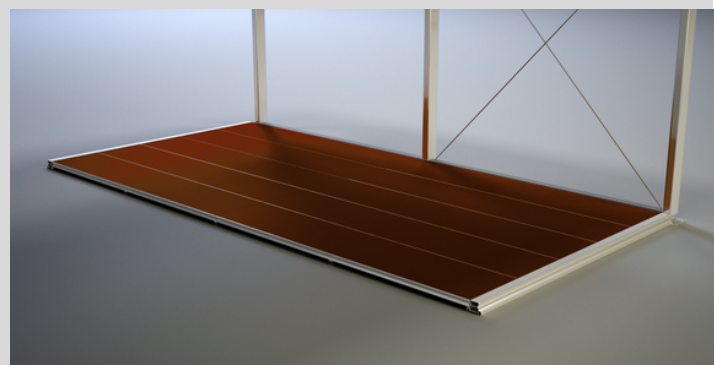
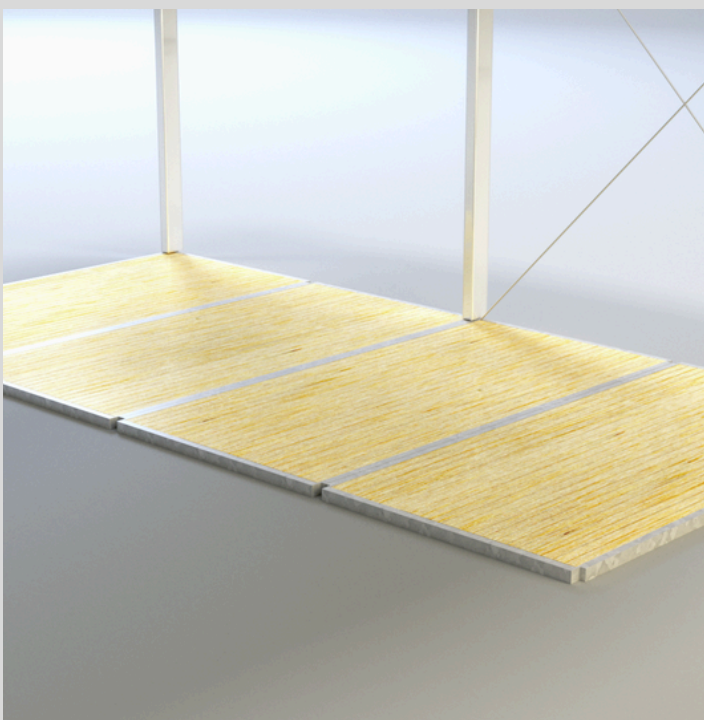
The visually appealing cassette floor is available with different wooden coverings and, with its lightweight aluminum substructure, has a traffic load of 350 and 500 kg/m².

Heavy Duty Flooring

The heavy-duty floor is the most efficient floor system in our range, which can be quickly installed using a forklift or crane. In addition, it has a low transport volume compared to other flooring systems.

Steel substructure with wooden laying panels

The steel substructure with wooden laying panels is a proven, solid and cost-effective flooring system that is available with a traffic load of 350 and 500 kg/m².



PERTH FEATURES

Accessories

Doors & Accessories

Single-leaf door / double-leaf door

Entrances and exits in various facade systems, the single and double-leaf doors can be installed in our structure systems and visually adjusted to match the rest of the side paneling.

Indoor/outdoor ramp

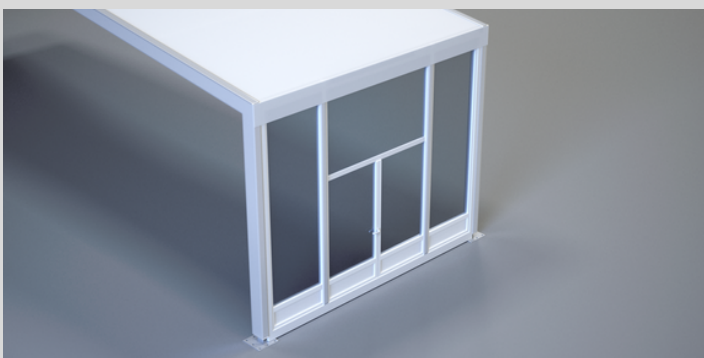
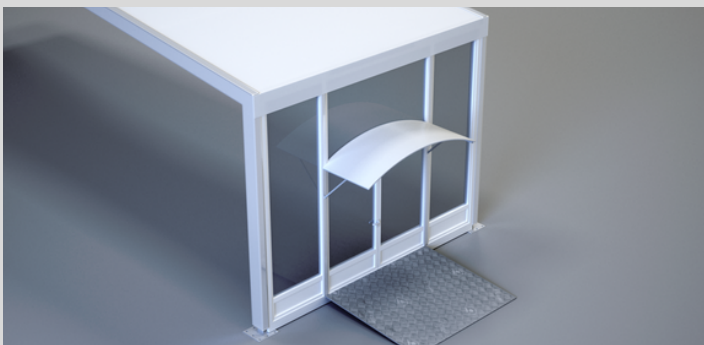
To enable barrier-free access to our structure systems, we offer various entry and exit ramps made of steel and aluminum.

Overhead Door Shelter

Various canopies are available separately from our doors, which visually complete your entrance area and offer weather protection for this area.

Transport Racks

Our transport racks offer optimal protection for loading and storing all structure and accessory parts.



PROJECT

Summerset Retirement Village

Perth Structures are superior to the classic marquee, efficient to operate, easy to maintain and highly durable.



Summerset Retirement Village in Cranbourne North provides relaxing retirement living with easy access to supermarkets and shopping centres that include a medical centre, cafés and restaurants. Summerset wanted a convenient recreation room to add to the village's new spacious homes in the stunning resort-style facilities.

HR Structures provided a 12.00m x 20.00m x 3.00m Perth Structure with a curved Thermo roof, which was chosen for its excellent insulation and climate control qualities. The structure included a unisex toilet facility, open plan kitchen with white gloss cabinets.

Now the residents of Summerset Cranbourne North have a great space to eat, chat and play.



SPECIFICATIONS

- 12m x 20m x 3m
- Curved roof
- Thermo roof system
- 2 double doors
- 8 bays Glass walling
- 3.5m bays of Iso panel insulated wall
- Disable unisex toilets
- Provisions for kitchen



OUR PERTH

Structure Types

Event Space

Perth Structure offers a flexible and lightweight frame and walling system that can be used to create sophisticated and visually stunning event structures for weddings, corporate functions, and outdoor events. The structures are easy to set up and take down on any terrain without the need for time-consuming foundations.

Sports

Perth Structures are built using bespoke materials and building techniques specifically for sports buildings, offering great lighting, space, and temperature control for an ideal exercising environment. They use ABS wall panels, thermo roofs, cassette floors, and climate control to create sports buildings that are both practical and inspiring.

Government

Flexible building space for government agencies or local councils. Modular structures can serve as temporary field offices in areas where traditional construction isn't an option.



OUR PERTH

Structure Types

Education & Healthcare

Perth Structure provides a solution for temporary classrooms and covered social spaces in schools, colleges, and universities. Plus, healthcare, hospitals and aged care. They offer modular buildings in different sizes up to 25m wide, and can build in confined areas with limited space.

Mining I Camp Facilities

The Perth Structure is flexible and can be used as accommodation, mess halls, or emergency services space, with various flooring, wall, and roofing options available. Climate control systems and electricity access are also offered for a fully functioning space.



Your Innovative Partner in Modular Building

Modular buildings provide better opportunities for companies interested in greening the footprint of the building construction process, as well as the impacts of recycling the building after it's complete. As modular structures deliver positive environmental outcomes, then modular construction can be an ideal fit for any company looking for a flexible, renewable, and sustainable method of building.

Modular construction is a highly streamlined process that can see project times reduced by up to 50% as the structure components are manufactured offsite. And the insulated structure ensures a more consistent R-value rating (the measure of thermal resistance).

Modular structures are leading the way to reduce the extraction of new material resources, demolition waste, construction time and transportation costs, while ensuring that these structures have a new purpose beyond its planned lifespan.

Structures can be relocated, packed down in a matter of days and moved to another site. They can also be repurposed for different functions – including applications in the commercial and industrial sectors – their flexible configurations adapt well to different applications, such as offices, hospitals, warehouses, airport terminals, sporting facilities and many other large scale commercial developments.



**Design.
Innovation.
Tradition.**



Build Your Next Project

HR STRUCTURES

CONTACT



1800 505 144



sales-au@hr-structures.com



www.hrstructures.com.au



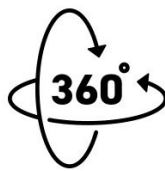
13 Pikkat Drive, Braemar NSW 2575



GERMAN
ENGINEERED



CUSTOM
SOLUTIONS



RELOCATABLE
RECONFIGURABLE



PURCHASE
OPTION



GREENER
FUTURE

