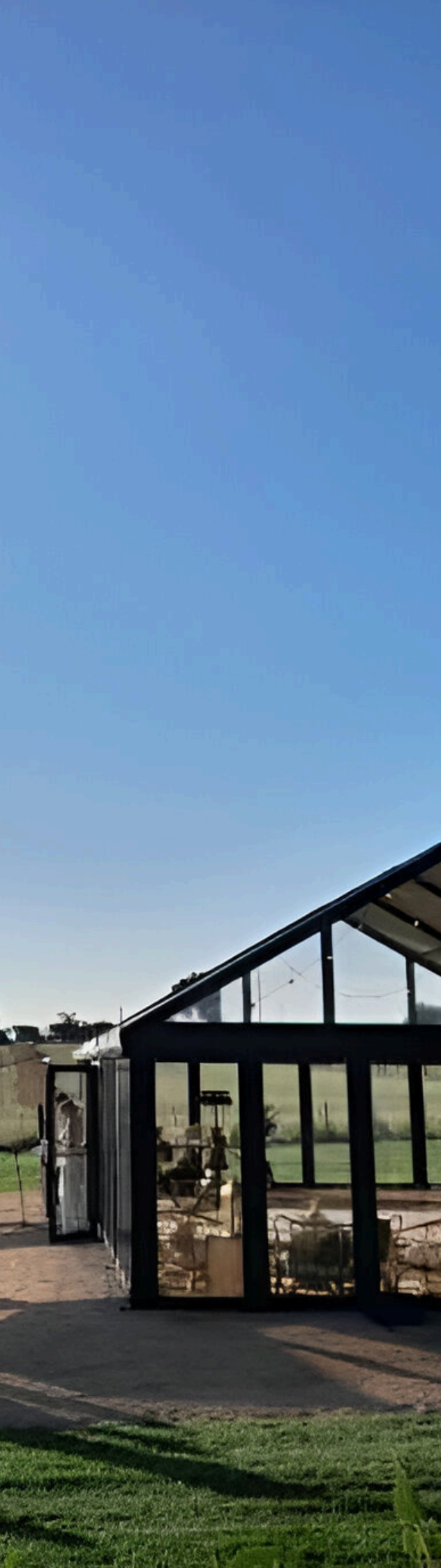




# MARQUEES



# CONTENTS

## — 03

INTRODUCTION

## — 04

EXCEPTIONAL MARQUEES

## — 05

EVENT SOLUTIONS

## — 06

VERSATILE MARQUEES

## — 07

FEATURES

## — 12

STRUCTURE TYPES

## — 14

PROJECTS

## — 16

CONTACT

## Introduction

HR Structures has one of the most technically advanced design & production centres in Europe.

HR Structures Australia are the official Australasian agent for HR Structures GmbH. A company that uniquely combines the customer care of a family run business with the service capacity of a global powerhouse.

Pioneering product innovation, quality and performance are at the heart of their products, people and processes, the German facility located in the Hessian town of Grebenhain, can produce up to 80,000 m<sup>2</sup> of new structures per week – ensuring fast, economical, factory-direct dispatch worldwide.

HR Structures GmbH state-of-the-art factory incorporates purpose-built production lines.

All structures are designed to comply with international design code criteria, including the USA-IBC2009/12 and AS/NZS standards.

All components used (roofs and walling systems) are designed to comply with international fire safety codes according to DIN 4102 B1, M2, BS5438/7837, USA NFPA701.



**Design.  
Innovation.  
Tradition.**

# OUR MARQUEES

## Exceptional Marquee Solutions

### For weddings and Events

When it comes to event and wedding marquees, HR Structures is highly experienced in manufacturing top-quality products that offer unmatched strength, durability, and coverage on the Australian market. Our marquees are German-engineered to ensure superior longevity, making them a wise investment for event venue operators who frequently host multiple events.

Our versatile marquee range is extensive and can be tailored to your specific needs. We can produce a variety of compatible marquees that seamlessly integrate with temporary structure systems from other major suppliers. This means you can choose from a range of vendors without sacrificing quality, availability, or pricing.

Our marquees are not only functional but also attractive semi-permanent structures that can be displayed to potential clients for weddings and corporate events. It's the perfect choice if you're constantly hiring marquees.



# OUR MARQUEES

## Event Solutions

---

### Premium Marquees

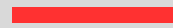
For event operators with attractive garden estates that want to invest in a large marquee to host weddings and events, HR Structures have marquees in a range of sizes and customisations. You can choose from a striking white powder-coated frame topped with a transparent roof cover or white opaque roofs to keep your guests cool during the hot summer months.

Our marquees are designed to cater to your needs and preferences. We offer an array of accessories such as heavy-duty cassette flooring, double glass entrance doors, framed glass, and clear PVC walling that give the marquee an elegant appearance.



# OUR MARQUEES

## Versatile Marquees



### For Events

The aluminium frames are robust and meet the highest safety standards in Australia.

Designed for clear span space, the modular aluminium frames range up to 60.00m in width, with leg heights of 4.00m and extendable lengths of 3.00m or 5.00m bays with gable ends.

Choose from high-grade, single-skin PVC covers that are flame-retardant and come in transparent, translucent, or opaque. The PVC walls can slide easily along a track system to create an indoor-outdoor look. Alternatively, opt for semi-permanent framed glass and durable ABS solid walls.

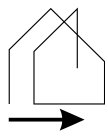


# FEATURES

## Structure Profile

- Bracing System: Internal high-level bracing giving open & clear span spaces.
- Frame Construction: Hard pressed 4 groove aluminium cube profile.
- Profile Size: Profile sizes relative to situation requirements.
- Roof Covers: Single Skin PVC, Polyglass PVC.
- Wind Loading: Structures are all calculated to withstand wind loading based on the physical site location, and to meet Australian and European safety standards.
- U-Values:
  1. Roofs – 1.5 W/m<sup>2</sup>K
  2. Walls & Gables – 0.44 W/m<sup>2</sup>K

## Specifications



**Span Width**  
3.00m - 60.00m



**Length**  
Unlimited in 3.00m & 5.00m bays



**Side Height**  
4.00m



**Custom**  
Fixtures & Dimensions available



**Purchase**  
Request a Quote

## ROOF OPTIONS

Single-skin roof cover - Flame-resistant pursuant to DIN 4102-B1. Available in transparent, translucent, or opaque. Flame-retardant pursuant to DIN 4102-B1. Available in transparent, translucent or opaque.  
Polyglass PVC: Transparent PVC Covers allows for natural light and is an exceptional alternative to the white PVC Covers.

## WALL OPTIONS

Vinyl Facade  
Insulated Facade  
Glass Facade  
Glass Sliding Walls  
PVC Side Walls  
Polyglass Side Walls

## FLOOR OPTIONS

Cassette Floor  
Heavy Duty Floor  
Steel Substructure with Wooden Laying Panels

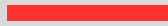
## ANCILLIARIES

Ventilation panels  
Signage parapets  
Various door types  
Various window types  
Balustrades  
Gutter/Downpipes  
Disability access  
Wet areas  
HVAC



# MARQUEE FEATURES

## Accessories



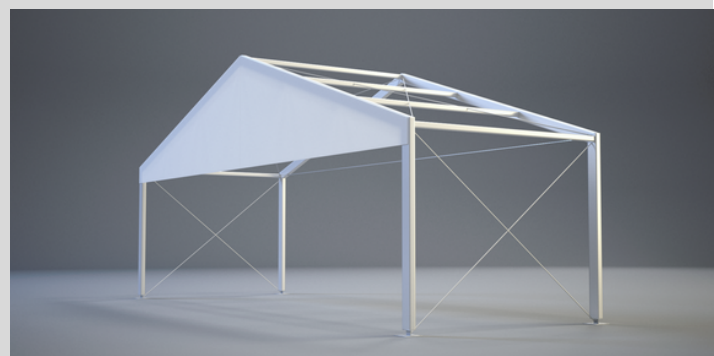
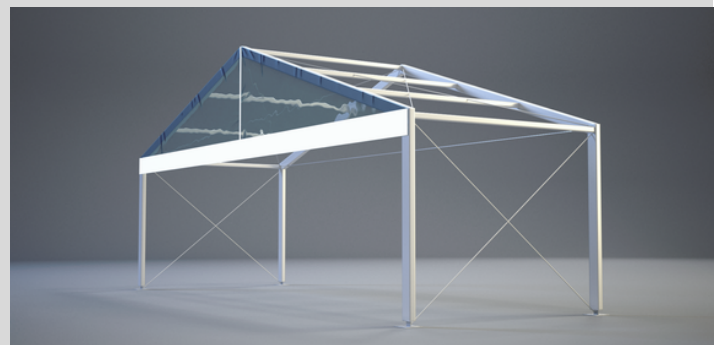
## Roof Cladding

### Single-layer roof PVC Covers / Gable white/translucent

The flame-retardant PVC Covers according to DIN 4102-B1 is best suited for roofs or insulated structures. The single-layer PVC Covers is available in both translucent and opaque colours in a wide variety of colours.

### Polyglass roof PVC Covers / Gable

Our transparent PVC Covers allows for natural light and is an exceptional alternative to the white PVC Covers.





# MARQUEE FEATURES

## Accessories

---

### Side Panels

#### Vinyl Facade

The Vinyl facade ensures a higher-quality side appearance and, thanks to its strength, offers better burglary and weather protection.

#### Insulated Facade

The insulated facade not only ensures a higher-quality side appearance, but in addition to its better protection against burglary and weather, it also offers additional thermal insulation.

#### Glass Facade

Available in a variety of designs, such as vinyl or aluminum frame, uninsulated or insulated glass, in various colours and tints.

#### Glass Sliding Walls

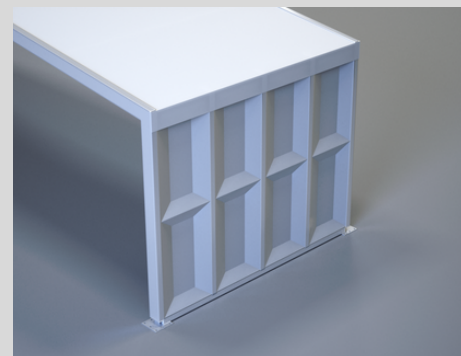
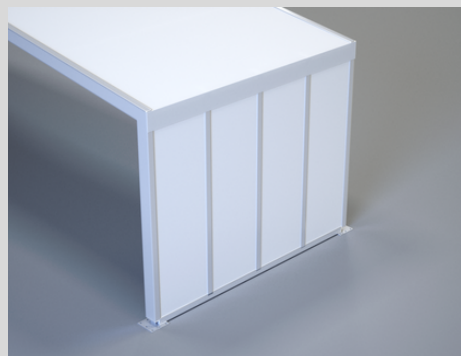
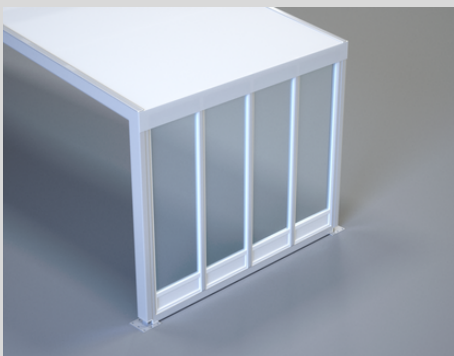
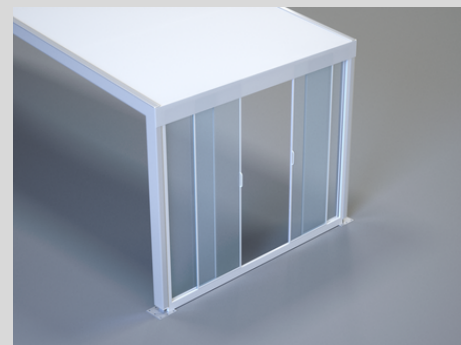
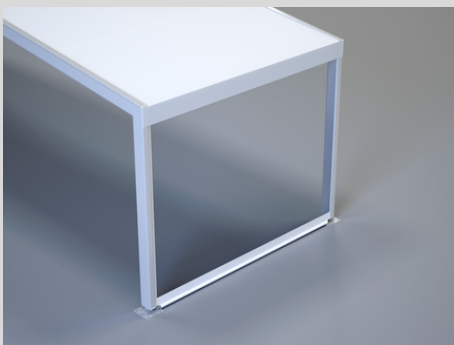
Entrances and exits or window elements in various facade systems, the glass sliding walls can be installed in our facade systems and visually adjusts to match the side paneling.

#### PVC Side Walling

The flame-retardant PVC Covers according to DIN 4102-B1 is available in a range of colours, both translucent and opaque.

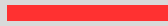
#### Polyglass Side Awning

Our transparent covers for even more light is an exceptional alternative to the white PVC Covers.



# MARQUEE FEATURES

## Accessories



## Flooring

### Cassette Flooring

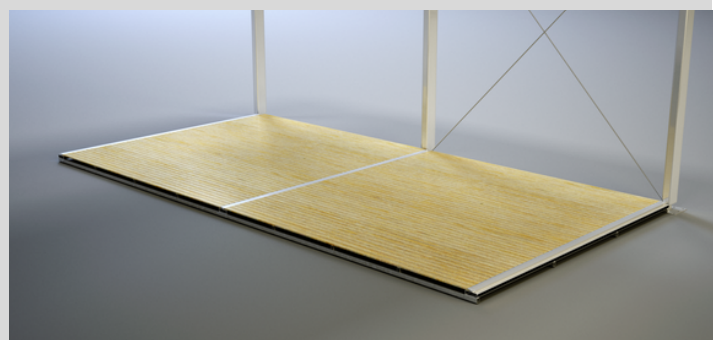
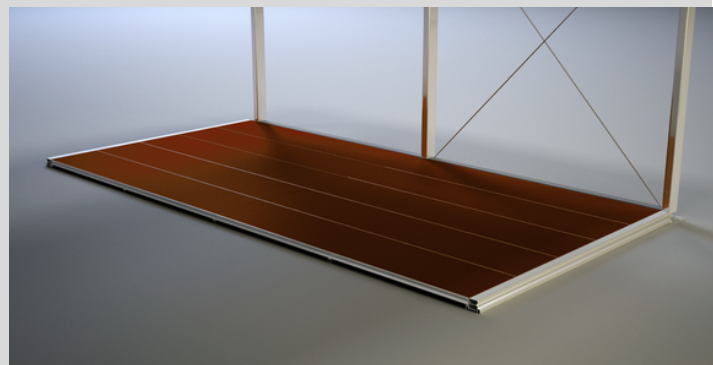
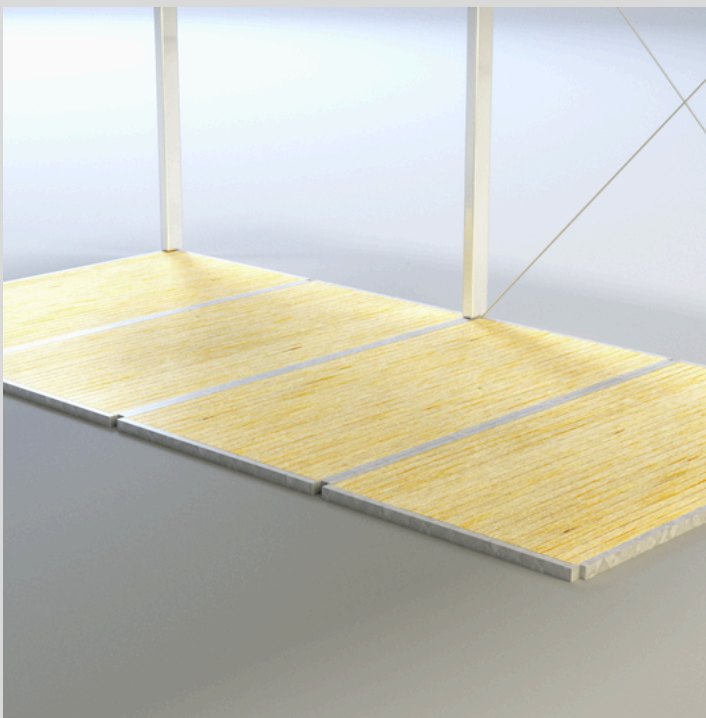
The visually appealing cassette floor is available with different wooden coverings and, with its lightweight aluminum substructure, has a traffic load of 350 and 500 kg/m<sup>2</sup>.

### Heavy Duty Flooring

The heavy-duty floor is the most efficient floor system in our range, which can be quickly installed using a forklift or crane. In addition, it has a low transport volume compared to other flooring systems.

### Steel substructure with wooden laying panels

The steel substructure with wooden laying panels is a proven, solid and cost-effective flooring system that is available with a traffic load of 350 and 500 kg/m<sup>2</sup>.



# MARQUEE FEATURES

## Accessories

---

### Doors & Accessories

#### Single-leaf door / double-leaf door

Entrances and exits in various facade systems, the single and double-leaf doors can be installed in our structure systems and visually adjusted to match the rest of the side paneling.

#### Indoor/outdoor ramp

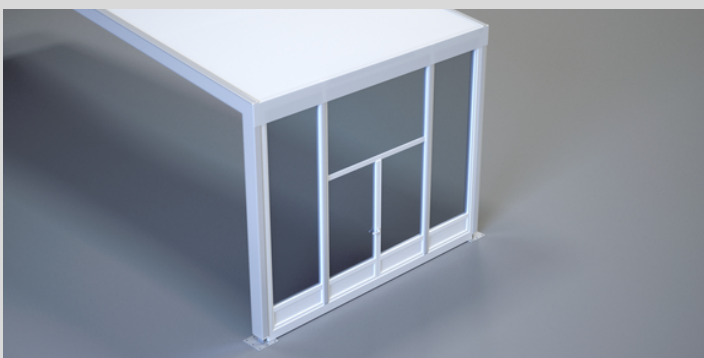
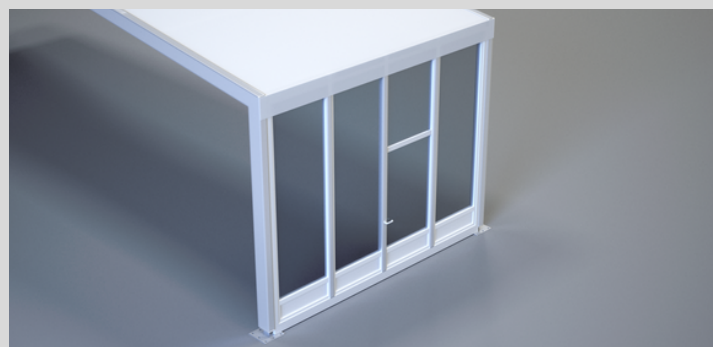
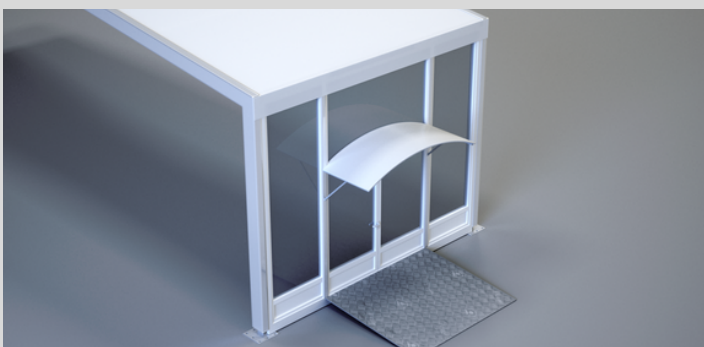
To enable barrier-free access to our structure systems, we offer various entry and exit ramps made of steel and aluminum.

#### Overhead Door Shelter

Various canopies are available separately from our doors, which visually complete your entrance area and offer weather protection for this area.

#### Transport Racks

Our transport racks offer optimal protection for loading and storing all structure and accessory parts.



# OUR MARQUEES

## Structure Types

---

### Wedding & Hospitality Providers

Our marquees provide customisable solutions for expanding and weatherproofing venue spaces. They can be adapted to suit your space and design goals, with options like provisions for power, air conditioning, flooring, and ceiling linings.

### Exhibitors

HR Structures offers small marquees for event exhibitors who require weather protection while showcasing their products at trade fairs, festivals, and exhibitions. The marquees come in various sizes and can be custom branded to suit individual needs.

### Government Events

Our marquees are preferred for government events due to their ease of use, versatility, and durability. They are suitable for several events such as council events, product launches, community events, and festivals.



# OUR MARQUEES

## Structure Types

---

### Winery Operators

HR Structures provides hospitality solutions with marquees suitable for various events, including wine tasting, corporate conferences, and exhibitions. The structures reflect the brand's prestigious look and feel, both inside and outside.

### Sports Club Operators

Our marquees are designed to provide a modern, luxurious space with excellent views for horse racing enthusiasts. The structures feature framed glass walls for unobstructed views of the racetrack and can be customised for retail stores, cafes, and product activations. They can also be designed for various entertainment spaces, hospitality areas, bar sections, and seating areas, with provisions for catering kitchens and wet areas.





**HR** STRUCTURES

Marquee

Scrub Hill Wedding Venue

9.00m x 15.00m with Black  
Powder-Coated Frame



**HR** STRUCTURES

Marquee

Scrub Hill Wedding Venue

Glass Façade | Double Glass  
Entrance Doors

## Your Innovative Partner in Marquee Structures

Marquees provide better opportunities for companies interested in greening the footprint, as well as the impacts of recycling the building after it's complete.

As marquee structures deliver positive environmental outcomes, then they can be an ideal fit for any company looking for a flexible, renewable, and sustainable method of building.

Marquee manufacturing is a highly streamlined process that can see project times reduced by up to 50% as the structure components are manufactured offsite. And insulated structures ensures a more consistent R-value rating (the measure of thermal resistance).

Marquee structures are leading the way to reduce the extraction of new material resources, demolition waste, construction time and transportation costs, while ensuring that these structures have a new purpose beyond its planned lifespan.

Structures can be relocated, packed down in a matter of days and moved to another site. They can also be repurposed for different functions – including applications in the commercial and industrial sectors – their flexible configurations adapt well to different applications, such as offices, hospitals, warehouses, sporting facilities and many other commercial projects.



**Design.  
Innovation.  
Tradition.**





**Build Your Next Project**

**HR** STRUCTURES

## CONTACT



1800 505 144



sales-au@hr-structures.com



www.hrstructures.com.au



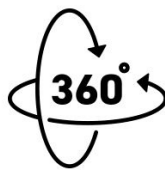
13 Pikkat Drive, Braemar NSW 2575



GERMAN  
ENGINEERED



CUSTOM  
SOLUTIONS



RELOCATABLE  
RECONFIGURABLE



PURCHASE  
OPTION



GREENER  
FUTURE

