



CARGO STRUCTURE



CONTENTS

— 03

INTRODUCTION

— 04

CONTEMPORARY WAREHOUSE

— 05

BENEFITS

— 06

HEAVY DUTY DESIGN

— 07

FEATURES

— 14

STRUCTURE TYPES

— 16

PROJECTS

— 18

CONTACT

Introduction

HR Structures has one of the most technically advanced design & production centres in Europe.

HR Structures Australia are the official Australasian agent for HR Structures GmbH. A company that uniquely combines the customer care of a family run business with the service capacity of a global powerhouse.

Pioneering product innovation, quality and performance are at the heart of their products, people and processes, the German facility located in the Hessian town of Grebenhain, can produce up to 80,000 m² of new structures per week – ensuring fast, economical, factory-direct dispatch worldwide.

HR Structures GmbH state-of-the-art factory incorporates purpose-built production lines.

All structures are designed to comply with international design code criteria, including the USA-IBC2009/12 and AS/NZS standards.

All components used (roofs and walling systems) are designed to comply with international fire safety codes according to DIN 4102 B1, M2, BS5438/7837, USA NFPA701.



**Design.
Innovation.
Tradition.**

OUR CARGO

Contemporary Warehouse

Industrial space when and where you need it.

If you're pressed with a very short construction timeline, choosing a modular warehouse can be your best choice. Compared with a traditional construction method, modular warehouses have a faster installation and construction process.

The Cargo can often reduce construction time by around 30% to 60% compared to a traditional warehouse. This is due to how the Cargo Structure is pre-manufactured in a factory and brought to your site ready for installation.

You can also reduce costs on the Cargo Structure without sacrificing durability and quality. Because the structure is built offsite, there are multiple protections against onsite construction, such as putting up scaffolding, labourers, theft and delays brought about by weather conditions.

This makes the Cargo Structure an excellent option for businesses within the industrial sector that require economical structures fast. Perfect for storage, logistics, transport, waste management and recycling, agriculture, warehouses, industrial estates and more.



OUR CARGO

Benefits

Space, versatility, strength, and adaptability

The Cargo Structure comes in a variety of dimensions and plans. Warehouses used for manufacturing and storage generally need large and uninterrupted interior spans, the Cargo can have clear span widths of 30.00m and a side height of 6.30m.

The Cargo Structure also features customisation and flexibility of the interior or exterior spaces for future alterations and expansions.

Our proven modular construction system offers fast, cost-effective, and transportable warehouse solutions, permanent modular buildings, which offer the same amenities as a conventional warehouse.

The Cargo custom modular design allows for choices in layouts and finishes, insulation, and load bearings that are easy to install, portable, and for high wind areas the Cargo can be anchored specific to the site.



OUR CARGO

Heavy Duty Designs

Made Tough

The Cargo structure is both aesthetic and functional, allowing you to create safe and efficient workplaces that adhere to stringent regulations, and international building code requirements (IBC).

Accessories like custom sized ceiling heights and steel roller doors allow access to large vehicles like semi-trailers and heavy machinery. Doors for personnel can also be installed, making the Cargo structure easy to access for anyone looking to move materials and equipment in and out.

- Frames made from steel and aluminium
- Big enough and tough enough for heavy duty vehicle and equipment bays
- Can be ground-staked or bolted as required
- As secure as site built
- Portable – setup / takedown in a matter of weeks
- Environmentally friendly
- The building's potential to repurpose allows for high resale values



FEATURES

Structure Profile

- Bracing System: Internal high-level bracing giving open & clear span spaces.
- Frame Construction: Hard pressed 4 groove aluminium cube profile.
- Profile Size: Profile sizes relative to situation requirements.
- Roof Covers: Steel Sheet, Trapezoidal Sheet, Thermo PVC system, Insulated Sandwich Panel, Single Layer PVC, Underlay PVC Cover or Parapet system
- Wind Loading: Structures are all calculated to withstand wind loading based on the physical site location, and to meet Australian and European safety standards.
- U-Values:
 1. Roofs – 1.5 W/m²K
 2. Walls & Gables – 0.44 W/m²K

Specifications

| | | | | | |
|---|---|---|---|---|---|
|  |  |  |  |  |  |
| Span Width 5.00m - 30.00m | Length Unlimited in 5.00m bays | Side Height Up to 6.30m | Wind Load To site specifics | Custom Fixtures & Dimensions available | Anchoring As site specifically requires |

ROOF OPTIONS

- Steel Sheet
- Trapezoidal Sheet
- Thermo PVC System
- Insulated Sandwich Panel
- Single Layer PVC
- Underlay PVC Cover
- Parapet system

WALL OPTIONS

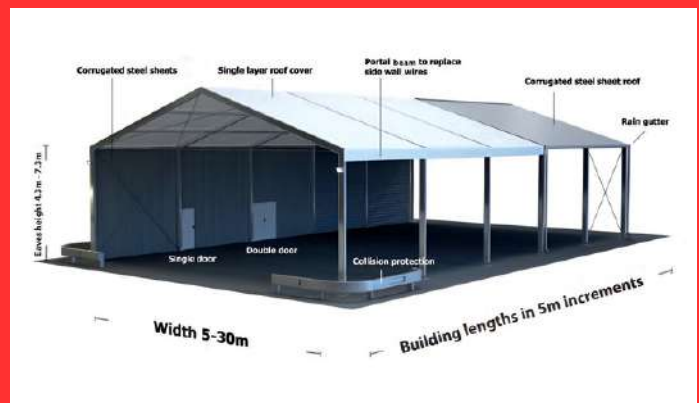
- Steel Sheet
- Trapezoidal Sheet
- Insulated Sandwich Panel
- Single Layer PVC
- Underlay PVC Cover
- Skyline Glass Elements

FLOOR OPTIONS

- Steel Substructure with Wooden Laying Panels
- Heavy Duty Flooring

ANCILLIARIES

- Indoor/Outdoor Ramp
- Gutter/Downpipe
- HVAC
- Internal/External Stairs
- Overhead Door Canopy
- Ventilation Panels
- Mezzanine Floor
- Internal Partitions
- Signage Parapets
- Wet areas
- Guard Rail
- Lighting
- HVAC



CARGO FEATURES

Accessories

Roof & Side Panels

Single-layer PVC Covers

The flame-retardant PVC Covers according to DIN 4102-B1 is suited for roofs or insulated structures. Available in translucent and opaque in a variety of colours.

Underlay PVC Covers

Underlay PVC Covers are a lighter material under the outer single-layer PVC Covers or the trapezoidal sheet to absorb and drain away any condensation that may arise.

Thermal Roof PVC Covers

The air-filled double-shell roof PVC Covers offers additional insulation and condensation protection in the roof area.

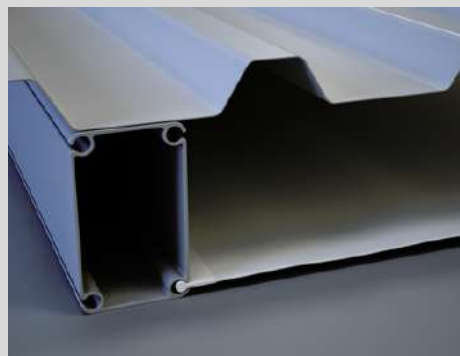
The PVC Covers, flame-retardant according to DIN 4102-B1, is translucent and opaque and available in a variety of colours.

Trapezoidal sheet

The strip-galvanized and coated trapezoidal sheet is best suited for roofing and insulated structures. A variety of colours available, and a fleece coating in the roof area to prevent condensation.

Sandwich Panel

The insulated sandwich element is suited for insulated structures. Available in different material thicknesses and suitable insulation values with PUR foam or mineral wool filling. Different exterior colours are also possible.



CARGO FEATURES

Accessories



Roller Doors

PVC Covers

Sliding PVC Covers are used in insulated structures and can be used flexibly thanks to their manual and easy handling.

Sliding Roller

The manually operated sliding roller offers increased theft protection compared to the PVC Covers sliding roller, is designed for use in insulated structures.

Roller Shutter

The electrically operated roller shutter has light insulation and is easy to operate thanks to the control.

Sectional Door

The electrically or manually operated sectional door, which has increased thermal insulation compared to roller doors, is ideal for use in insulated structures. Options such as window sections or integrated doors are also available.



CARGO FEATURES

Accessories



Entrance Doors

Single Leaf Door

Individually usable staff or escape door.

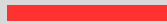
Double Leaf Door

Like the single-leaf door, the double-leaf door can be used individually as a staff or escape door and can also be filled with glass.



CARGO FEATURES

Accessories



Windows

Single-leaf / 2-leaf / 4-leaf windows

Various windows can be integrated into the structure cladding on the sides to provide light and fresh air.

Display Window

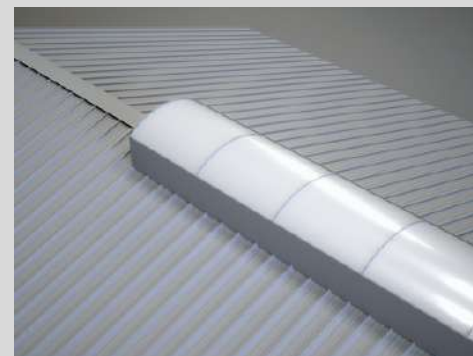
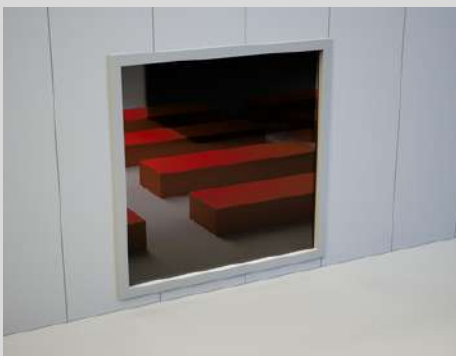
Approx. 2.2 x 2.50m. Our display windows serve as the greatest possible source of light and are ideal for sales and exhibition rooms.

Dome Light

The dome light or ridge light strip is used to provide direct light in the roof area and additional air supply. Further options such as RWA equipment are available.

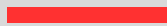
Wall Light Strip Polycarbonate

Approx. 1.0 x 4.0m. The wall light strip is the cost-effective alternative to glass elements and is usually installed in the wall cladding under the eaves area.



CARGO FEATURES

Accessories



Anchoring

Soil Nails

Soil nails are the simplest and most cost-effective solution for temporary anchoring, as this variant can be used to fasten our industrial structures to a wide variety of surfaces without foundations.

Dowels

Dowels are mostly used in connection with permanent buildings and concrete foundations to ensure a secure and long-lasting stability of the structure.

Floor Sealing

When closing the floor using a facade and end plate, there are different variants and options for sealing. Depending on the surface, appropriate finishing options are available.



CARGO FEATURES

Accessories

Miscellaneous

Lighting

Various lighting systems including electronics are available for additional lighting in the interior of the structure.

Heating

Various mobile heating systems enable simple and energy-saving heating of the industrial structure.

Gaurd Rail

The guardrail protects the industrial structure from external influences such as approaching forklifts and trucks.

Rain Gutter

In order to drain away rainwater in a controlled manner, our rain gutter including the associated downpipes offers the ideal benefit.

Stairs

For multi-storey systems, we offer indoor and outdoor stairs in a variety of sizes, shapes and designs.

Internal Partitions

In order to divide the industrial structure into several sections, internal gable partitions can be installed. The individual subdivisions can be connected using doors and rollers.



OUR CARGO

Structure Types

Canopies

Industrial canopies are perfect for companies that want to protect their equipment, vehicles, tools, and employees from the elements. The Cargo canopy can house equipment up to 6.30 metres in height. This allows for large scale equipment and vehicles to be stored and the crew can take equipment in and out without worrying about accidents.

Sensitive Equipment Storage

If you have unique requirements such as insulation and condensation protection, the Cargo is designed for both heating and cooling. Our thermo roof solutions help you to manage air circulation, moisture evaporation, light, shade, and heat, and our reliable structures are capable of withstanding wind, frost, and hail.

For all-round temperature protection our insulated wall panels are available in various thicknesses. Windows can be single or double glazed as required.



OUR CARGO

Structure Types

Distribution Storage

The Cargo Structure provides ideal storage space to meet the demands of increased packaging, processing and distribution operations, and for seasonal peaks. From a basic storage facility, to a customised semi-permanent storage building, all our storage solutions are fully adaptable, with a wide range of options.

Flex Usage

Flex usage allows for a wide range of office and warehouse space. The Cargo Structure can be used for many purposes and is easier to retrofit to meet a company's needs than typical warehouse buildings. This flexibility is ideal for a wide range of companies that need office space with a warehouse component.





HR STRUCTURES

Cargo Custom Structure
ARB 4x4 Accessories

15.00m x 40.00m x 6.30m



HR STRUCTURES

Cargo Custom Structure
ARB 4x4 Accessories

Warehouse | Showroom |
Retail Space with Mezzanine

Your Innovative Partner in Modular Building

Modular buildings provide better opportunities for companies interested in greening the footprint of the building construction process, as well as the impacts of recycling the building after it's complete. As modular structures deliver positive environmental outcomes, then modular construction can be an ideal fit for any company looking for a flexible, renewable, and sustainable method of building.

Modular construction is a highly streamlined process that can see project times reduced by up to 50% as the structure components are manufactured offsite. And the insulated structure ensures a more consistent R-value rating (the measure of thermal resistance).

Modular structures are leading the way to reduce the extraction of new material resources, demolition waste, construction time and transportation costs, while ensuring that these structures have a new purpose beyond its planned lifespan.

Structures can be relocated, packed down in a matter of days and moved to another site. They can also be repurposed for different functions – including applications in the commercial and industrial sectors – their flexible configurations adapt well to different applications, such as offices, hospitals, warehouses, airport terminals, sporting facilities and many other large scale commercial developments.



**Design.
Innovation.
Tradition.**



Build Your Next Project

HR STRUCTURES

CONTACT



1800 505 144



sales-au@hr-structures.com



www.hrstructures.com.au



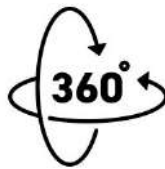
13 Pikkat Drive, Braemar NSW 2575



GERMAN
ENGINEERED



CUSTOM
SOLUTIONS



RELOCATABLE
RECONFIGURABLE



PURCHASE
OPTION



GREENER
FUTURE

